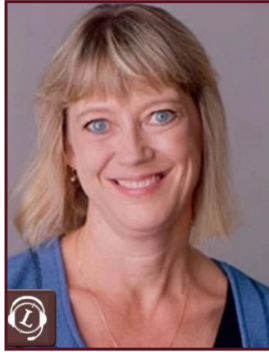


THE LEGACY THEATRE 2024 SEASON



**WHEEL LIFE
THEATRE TROUPE**

**LET'S GET
TOGETHER**



Dedicated to
DR. CRYSTAL BRIAN

This production is dedicated to Dr. Crystal Brian, a past member of Wheel Life Theatre Troupe, who through her mentorship as Head of Drama at Quinnipiac University utilized Drama Therapy and Devised Theatre Techniques in the creation of thought-provoking and change-centered theatre. Her decades of theatre-making with students and community members such as Veterans experiencing PTSD, marginalized communities needing change, and prison communities, among others has touched countless lives and given a voice to the voiceless. Having been instructed by Jan Cohen Cruz, legend in Drama Therapy and Social Change, I come to this project with great gratitude for the mentors before me and with such humility for the openness and willingness of the brave ensemble members in the Wheel Life Theatre Troupe for creating this work and putting themselves forward in this marvelous way.


- Keely Baisden Knudsen
Artistic Director, Legacy Theatre

Welcome to Legacy!

Follow Legacy on social media!

 facebook.com/LegacyTheatreCT

 [@legacytheatrect](https://instagram.com/@legacytheatrect)

 [@legacytheatrect](https://twitter.com/@legacytheatrect)

Legacy Wi-Fi

Network: LTC GUEST
Password: GestWiFi!

Gift Certificates and Merchandise are Available at the Box Office!



THE LEGACY THEATRE

JEFF PROVOST
Managing Director

KEELY BAISDEN KNUDSEN
Artistic Director

presents

WHEEL LIFE THEATRE TROUPE LET'S GET TOGETHER

This is a world premiere production of *Let's Get Together* and is a devised piece of theatre based on stories, conversations, and dramatic exercises of the members of the Wheel Life Theatre Troupe, compiled and written by KEELY BAISDEN KNUDSEN.

with

CAROLINE BERKOVICH DANA CANEVARI MAUREEN CARR
JULIE FITZPATRICK* JOSH GREENVALL WYNTER KNUDSEN
SARA MESSORE FITZ PANT

Production Manager SARAH PERO

Production Assistants KIERSTEN BJORK & NICK FETHERSTON

Lighting Designer JAMIE BURNETT

Director KEELY BAISDEN KNUDSEN

April 11-13, 2024, The Legacy Theatre, Branford, CT

The closing song "What We Can Do" is by Brad Ross and Keely Baisden Knudsen and has permission from its authors for its performance in this production.

This song has been published and recorded; search this title on the streaming platform of your choice!

Costumes provided in part by Pantochino Productions.

Pantochino Productions costumes originally designed for the stage by Jimmy Johansmeyer



* The Actor appears through the courtesy of Actors' Equity Association, the Union of Professional Actors and Stage Managers in the United States.

The video or audio recording of this performance by any means is strictly prohibited.

Cast

(in alphabetical order)

CAROLINE BERKOVICH, DANA CANEVARI, MAUREEN CARR, JULIE FITZPATRICK*,
JOSH GREENVALL, WYNTER KNUDSEN, SARA MESSORE, FITZ PANT

Other Ensemble Members

BROOKE JOHNSON, ANNIE KLEUTSCH, FELIX PETERSEN

*The Actor appears through the courtesy of Actors' Equity Association,
the Union of Professional Actors and Stage Managers in the United States.

LET'S GET TOGETHER IS PERFORMED WITHOUT AN INTERMISSION.

Learn More



Scan the code at left to access resources and learn more about Disability Rights,
the Disability Rights Movement, and Judy Heumann, the Mother of the Movement.
www.judithheumann.com/marchingforth

We also welcome you to stay after the performance to join us for a talkback
with members of the *Let's Get Together* company.

2024 SEASON SPONSORS & SUPPORTERS

Legacy Theatre gratefully acknowledges support from our Corporate and Foundation Supporters

MAINSTAGE SEASON



The Diaries of Adam and Eve



The Great American Mousical

With generous support from
THE RODRIGUEZ
FAMILY

Love Affair

THE
BURRY FREDRIK
FOUNDATION



WebsterBank



DRACULA: A Comedy of Terrors



FAMILY SERIES



ChristensenLANDSCAPE

Morgan Stanley

THE JORGENSEN GROUP
AT MORGAN STANLEY

With generous
support from



Seedlings
Foundation

SUNDAY BROADWAY CONCERT SERIES

With generous support from
JANA AND TOM
SHEA



Sweet Dreams



MEDIA PARTNER



COMMUNITY PARTNERS



Who's Who



CAROLINE BERKOVICH [she/her/hers] is a Branford resident who is excited to return to the stage after too many years away. After studying theater at the Educational Center for the Arts in New Haven, she applied her acting skills to non-theatrical roles such as preschool teacher, camp counselor, babysitter/nanny, and her current profession as a speech-language pathologist in Birth to Three. She is passionate about issues of advocacy and inclusivity, and honored to be a part of such an incredible group of individuals.



DANA CANEVARI has worked with the Legacy Theatre for several years, first performing at the International Festival of Arts and Ideas. She performed a monologue that she wrote at the Guilford Performing Arts Festival in 2019. In 2021 she again performed at the Guilford Festival doing a play written by Julie Fitzpatrick, *All the World's a Stage: A Guilford Pandemic Love Story*. She has participated in a performance piece at Legacy showcasing the work of the Wheel Life Theatre Troupe, and was in the cast of *Peter and Wendy*. Dana is from Norwalk, CT and has lived in New Haven since the 1990s.



MAUREEN CARR Legally blind since birth due to a congenital eye disease, she was educated at Oak Hill School for the Blind. Married, had twin sons, divorced, and as a single mother, raised her children. She returned to college, earning a BA in Sociology, Magna Cum Laude, and a MA in Counseling Psychology. She worked at the Eastern Blind Rehabilitation Center, VA CT Healthcare, for 25 years as a Vision Rehabilitation Therapist. Her personal experiences provided a unique perspective and she achieved special rapport with her students. She has sung professionally for most of her adult life, including one-woman shows, concerts, big bands, and has provided entertainment in many venues locally and nationally. She has travelled extensively, from riding camels in Egypt, to sailing the Turquoise Coast of Turkey. Maureen's passion is promoting advocacy for accessibility and inspiring people to achieve their highest level of independence, autonomy, and confidence.



JULIE FITZPATRICK* is a writer/actor/teacher who relishes teaching Acting for Adults and Create Your Own Solo Show Classes at Legacy. She also co-directs Wheel Life Theatre Troupe with the brilliant Keely Baisden Knudsen and is thrilled to be performing in *Let's Get*

Together with this remarkable cast and her talented son, Fitz. Julie has acted Off-Broadway, regionally, and in TV/short film. She is a member of The Playwrights Circle, Guilford Poets Guild & Ensemble Studio Theatre in NYC. She is the author of the solo show *77 U-Turn* and the book *Church on the Screen: A Sunday Series of Pandemic Poetry*, both available at Breakwater Books. More information on Julie's work can be found at www.juliefitzpatrick.com. Special thanks to her loves: Pete, Fitz and Baby Gracen.



JOSH GREENVALL Hello my name is Josh Greenvall, I'm 31 years old, and I'm the cofounder of Wheel Life Theatre Troupe. I have been with Legacy since 2018 and I'm glad to be performing shows with Wheel Life Theatre Troupe! Can't wait to see everyone at the up and coming performances.



WYNTER KNUDSEN is thrilled to perform again with the Wheel Life Theatre Troupe, and has enjoyed creating this piece of theater with the ensemble the past few months. She can be seen in the upcoming production of *Matilda* with the Guilford Youth and Family Services, playing Mrs. Trunchbull this June. Performances at Legacy have included Clock Chime Singer and Beggar Woman in *A Christmas Carol*, as well as roles in *Peter and Wendy* with the world-famous Pilobolus dancers, and Grumpy in *Snow White and the Seven Dwarfs*. She was also pleased to perform for the International Festival of Arts and Ideas for two summers. Big hugs to all members of the group and thank you for coming!



SARA MESSORE is thrilled to be a part of Wheel Life Theatre Troupe. This is their first year with the group after finding the group with Legacy through a theatre friend. Combining theatre with disability, felt like a wonderful way to mesh both of Sara's worlds together in a positive way!



FITZ PANT is a 6th Grader from Guilford. He is currently Charlie in *Willy Wonka Jr* at The Madison Arts Barn. This is his third production with Wheel Life. Previously he was in *Peter and Wendy*, as Tootles (the main lost boy), and *Pooh's Adventures*, as Piglet. He loves to read, watch TV, play tennis, sing, act, and listen to music.

Who's Who

KEELY BAISDEN KNUDSEN (*Director*) An award-winning director, Keely has performed, directed, and choreographed internationally in plays, musicals, operas, and dance companies in hundreds of theatrical productions and has performed in 48 of the United States and in the UK. Realizing her vision of a new theatre company on the Connecticut Shoreline, Keely's ideals of inspiring, inclusive work that uplifts the human spirit and connects communities formalized in the creation of the Legacy Theatre with Co-Founder Stephanie Stiefel Williams, a performing colleague and dear friend. Keely has directed, choreographed, and taught a myriad of performing arts courses at such institutions as Quinnipiac University, Yale University, Fairfield University, Hartt School of Drama, Southern Connecticut State University, Westminster College, and was the Director of Education of New Haven's acclaimed Elm Shakespeare Company for several years. Additionally a composer/lyricist and playwright, she is a member of ASCAP and a writer/curator for Rewls Productions (www.rewlsproductions.us). Her directing has been heralded by the *Arts Paper* as "...visually striking, emotionally moving" and "captivating" and of her direction of *Hamlet* it was said, "Knudsen has made the notoriously difficult Shakespearean language accessible." Her creation of the Wheel Life Theatre Troupe has been an especially rewarding program as she acts and directs with those who ambulate with crutches and wheelchairs. Her BFA is from New York University's Tisch School of the Arts, at which she graduated first in the class, and she received her Masters Degree in Drama on full scholarship from The Royal Scottish Academy of Music and Drama in Glasgow. Keely, her husband Brian, and five children (Saviah, Liviana, Wynter, Emery, and Reeves) reside in Guilford, CT.

JAMIE BURNETT (*Lighting Designer*) is a graduate of Carnegie Mellon University, recipient of the 2005 New Haven Arts award, and Founding member of The Elm Shakespeare Company. Lighting Designer at Elm Shakespeare for 26 years and Set Designer until 2009. Lighting Design credits include International Festival of Arts and Ideas 2018, *Requiem for an Electric Chair*; Iseman Theatre 2017, *Never Stand Still*. CCT: *Skeleton Crew*, *Rasheeda Speaking*, *Jesus Hopped the A Train*, *Sunset Baby*, *Topdog/Underdog*. SCSU: *Stop Kiss*, *Much Ado About Nothing*, *The Boyfriend*, and *Our Country's Good*. SHU: *In The Heights*, *Jesus Christ Superstar*. Citywide Open Studios: New Haven Armory; Projects2k: Stamford Train Station Façade Lighting; Producer/Lighting Designer/Production Manager for *Terra Tractus* (*The Earth Moves*), (2005) *Terra Mirabilia*, (2001) *Terra Lumina* and *Terra Continuum* (1999): performed in the Stony Creek Granite Quarry; PNM's Branford Luminata (2010) lighting Branford Green Town Hall. His company, Luminous Environments, specializes in theater and TV studio renovations and public art installations involving specialized lighting. Recent projects: Branford HS Theater, Fairfield Community Theater, and Legacy Theatre.

SARAH PERO (*Production Manager*) Born and raised in New Haven, CT, Sarah has been involved with local community and professional theatre for 20+ years. Acting at the age of 10 and directing at 16, Sarah received her BFA in Theatre, with a concentration in directing, from the University of Rhode Island. Right after college, Sarah was a part-time drama teacher in New Haven Public Schools and also taught theatre classes with Performing Arts Programs (South Windsor, CT). Sarah then worked at the Music Theatre of CT (Norwalk, CT) School of Performing Arts, wearing many hats as Administrative Manager, Teaching Artist, Director, Music Director, and Choreographer for the school. Sarah also managed the Box Office and was the Resident Sound Designer for MTC's Professional Main Stage. Following MTC, Sarah worked as Administrative Manager at the Downtown Cabaret Theatre (Bridgeport, CT). As a Production Stage Manager for various Theatre Productions in Rhode Island and Connecticut, some of her favorites include: *Tick, Tick Boom!*; *Little Women: The Musical*; and *You're a Good Man, Charlie Brown*. Sarah started Stage Managing at Legacy Theatre in 2021 and officially joined the team as the full-time Production Manager in 2022.

KIERSTEN BJORK (*Production Assistant*) has performed with companies such as Legacy Theatre, Seven Angels Theatre, Shoreline Theatre Company, Theatre Fairfield, and more, having worked on dozens of productions both on and offstage. Favorite performing credits include *Footloose* (Ethel McCormack), *The Spitfire Grill* (Percy), Disney's *Beauty and the Beast* (Enchantress, Madame D'Arque), *[title of show]* (Susan – BroadwayWorld Award Nomination: Best Performer in a Musical), *Joan Joyce!* (Young Joan Joyce – BroadwayWorld Award Nomination: Best Performer in a Musical), *Chicago* (June/"Squish"), *A Christmas Carol* (Fan/Mrs. Fezziwig/Others), and *A Princess Tea* (Evil Queen). Kiersten has also worked on numerous productions from the creative and technical sides, with favorites being *Rabbit Hole* (Scenic Designer), *The Curious Incident of the Dog in the Nighttime* (Master Carpenter), and *I Do! I Do!* and *The Last Five Years* (Assistant Stage Manager). Kiersten has been the Theatre Manager at Legacy for the past three seasons and is excited for all to come in 2024! She is a 2021 graduate of Fairfield University, graduating summa cum laude and Phi Beta Kappa with degrees in Theatre and English. In addition to her work with Legacy, Kiersten is also the Marketing and Communications Specialist for the Branford Community Foundation, an a cappella ensemble singer with the Royal Court Singers, a Book Reviewer for Booktrib, and a Theatre Critic with the Connecticut Critics Circle. You can read her theatre reviews at whitebirchblog.com. She also does freelance theatre work as a stage manager, technician, and carpenter for the Quick Center for the Arts and Theatre Fairfield. She thanks her parents, Christian, Carlin, Sarah, and Nick for their constant support.

Who's Who

NICK FETHERSTON (*Production Assistant*) When not in the Box Office, Nick is an actor operating out of the New Haven area. He is a graduate of Quinnipiac University with a degree in Theater Studies and is also an alumnus of The National Theater Institute at the Eugene O'Neill Theater Center. His Legacy Theatre credits include playing Jonathan in *The Play That Goes Wrong*, Lysander in *A Midsummer Night's Dream*, and Rosencrantz in *Hamlet*. Other acting credits include playing Mack in *Fairview* (Collective Consciousness Theatre), Don John/The Sexton in *Much Ado About Nothing* (Capital Classics), Albert in *Goldfish* (New Haven Theater Company), and Mr. Bingley in *Pride and Prejudice* (The Little Theatre of Manchester). Nick is also a standardized/simulated patient for Yale University and Quinnipiac University, where he uses his acting skills to assist in the training of medical students. Nick also teaches a variety of acting classes here at The Legacy Theatre. Website: nickfetherston.com

SPECIAL THANKS

Legacy Volunteers, TYCO,
The Stony Creek Community, The Town of Branford,
The Bjork Family, Brian W. Knudsen, Nancy Smith,
Don Weinbach, Joe Landry,
Christensen Landscaping (Lawn Company),
Auntie Bella (Cleaning)

SPECIAL THANKS FOR LET'S GET IT TOGETHER

Branford Parks and Recreation, Dr. Crystal Brian,
Jan Cohen-Cruz, Jimmy Johansmeyer, Annie Kleutsch,
Pantochino Productions, Brad Ross, Nancy Smith

LEGACY THEATRE STAFF

Managing Director	JEFF PROVOST
Artistic Director & Co-Founder	KEELY BAISDEN KNUDSEN
Co-Founder	STEPHANIE STIEFEL WILLIAMS
Theatre Manager	KIERSTEN BJORK
Production Manager	SARAH PERO
Development Director	ANNE RUNOLFSSON
Producer of Broadway Concert Series & Community Arts Coordinator	COLIN SHEEHAN
Community Outreach	MARY LEE WEBER
Box Office Manager	NICK FETHERSTON
Box Office & Development Associate	MELISSA STARKWEATHER
Front of House Manager & COVID Safety Manager	JEFF ZEITLIN
Front of House Alternates	RICH AFRAGOLA, KIERSTEN BJORK, NICK FETHERSTON, CHRIS LEMIEUX, KELSEY MULLIGAN, KENNY PELPHREY, MARY LEE WEBER
Graphic Designer	JOE LANDRY
House Photographer	SAMUEL BIBBINS

Contact Legacy Theatre

Box Office: (203) 315-1901 (Mon-Fri 10am-3pm)

Email: Info@LegacyTheatreCT.org

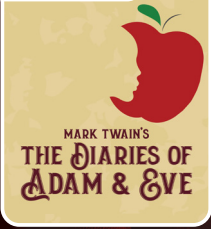
Website: www.LegacyTheatreCT.org

Gift Certificates available online or through the Box Office.



2024 Mainstage Season of Love

May 30 - June 16



MARK TWAIN'S
**THE DIARIES OF
ADAM & EVE**

July 11-28



**THE GREAT AMERICAN
MUSICAL**

August 8-25



**LOVE
AFFAIR**
A NEW MUSICAL

September 12-29



DRACULA
A COMEDY OF TERRORS

Subscribe Today and Save!

COMING SOON

April 20



BUBBLEMANIA!

April 21



LIZ CALLAWAY
with JOHN McDANIEL
at the Piano!

May 1-5



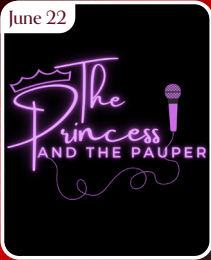
Compagnia TPO:
+ERBA
A Forest in the City

May 12



ANDREA McARDLE
with STEVE MARZULLO
at the Piano!

June 22



**The Princess
AND THE PAUPER**

June 30



KATE BALDWIN
with JOHN McDANIEL
at the Piano!

July 27



**CARDBOARD
EXPLOSION!**

August 17



SWEET DREAMS:
A BEDTIME STORY
COMES TO LIFE

LegacyTheatreCT.org (203) 315-1901

Scan to
explore
the entire
2024 Season!



LEGACY THEATRE 128 Thimble Islands Road in Branford, CT

Season subject to change.