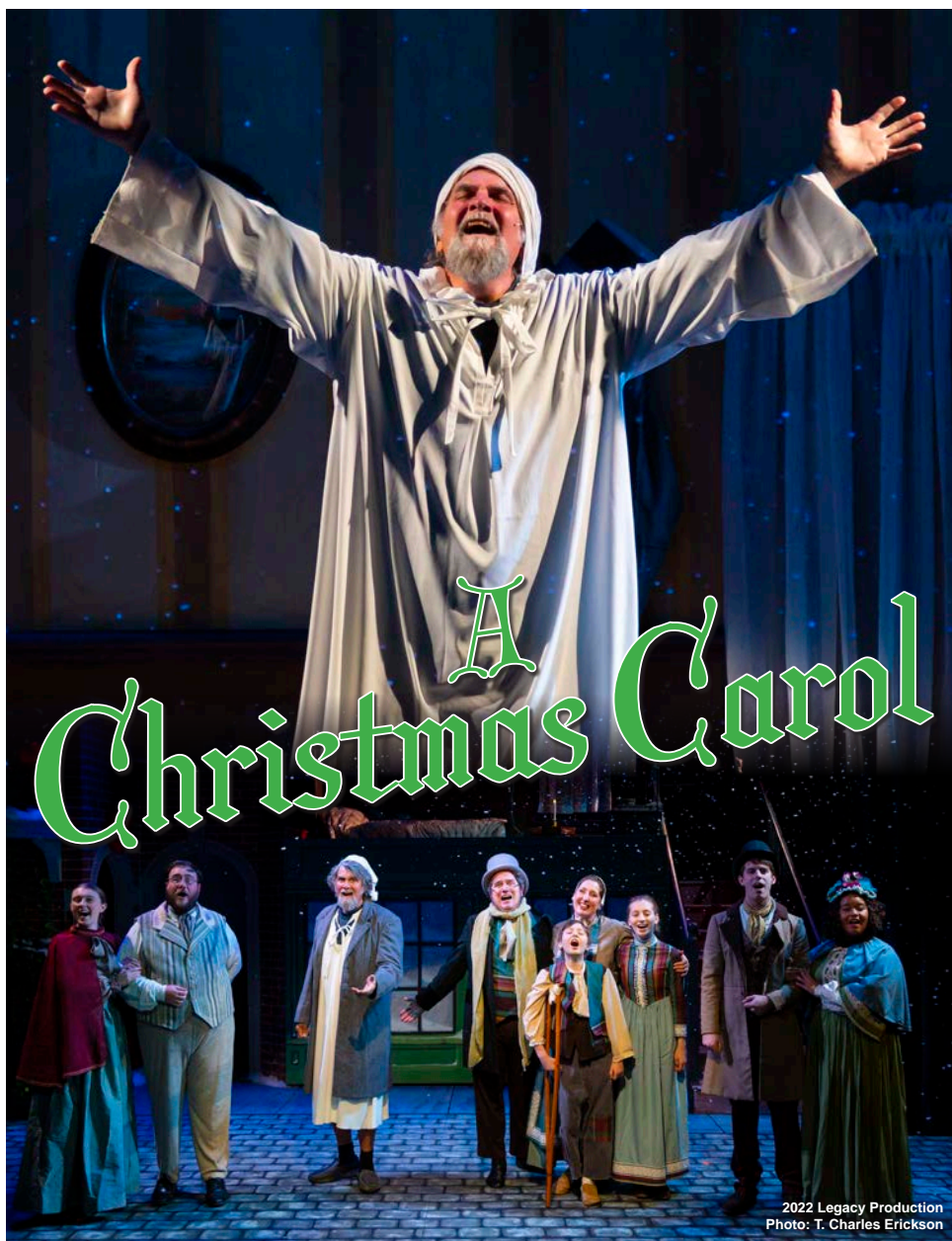


THE LEGACY THEATRE 2023 SEASON



A Christmas Carol

2022 Legacy Production
Photo: T. Charles Erickson



Marcum is thrilled to support

THE LEGACY THEATRE



MARCUM
ACCOUNTANTS ▲ ADVISORS

marcumllp.com

.....

WE SUPPORT THE ARTS

AT THE LEGACY THEATRE

.....

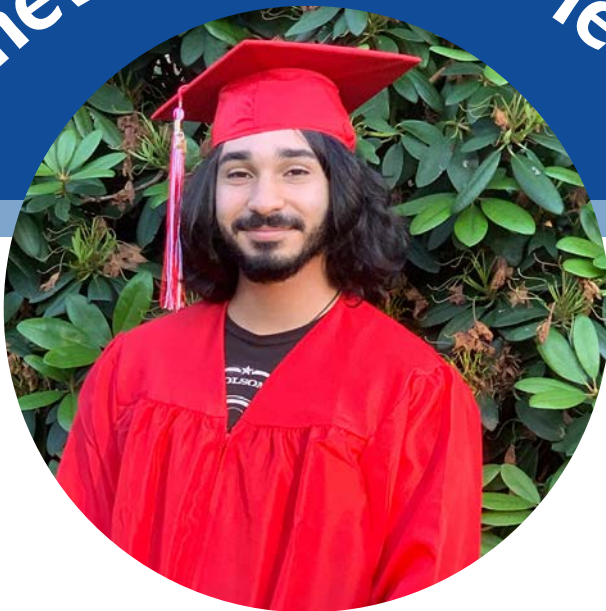


iHeartMEDIA

CONNECTICUT



It's never too late to learn!



FREE ACADEMIC CLASSES

High School Diploma / GED®

English for Speakers of Other Languages

U.S. Citizenship Preparation

AFFORDABLE ENRICHMENT CLASSES

Computers | Arts & Crafts | Cooking | Retirement Planning

| Health & Wellness | Music & Dance | Mind & Spirit |

World Languages | Classes for Kids & Families

Shoreline

ADULT EDUCATION

(203) 488-5693



SCAN ME!

SHORELINEADULTED.ORG

Letter from the Artistic Director



Thank you for sharing in the merriment of the season with the Legacy Theatre for our third festive offering of *A Christmas Carol!* We delight in having members of the core cast from 2021 join us year after year and welcoming new talents and faces to the company, as well!

The message of this classic tale is such a timeless reminder of gratitude and giving, and we are so grateful for your involvement in this wonderful community, year after year. May the warmth of this season and the messages of Hope and Rebirth fill you to the brim throughout this performance, and may you carry on those joyous lessons into the New Year!

Thank you from the bottom of my heart for your support of the Legacy, and we look forward to having you join us in our exciting 2024 season!

Keely Baisden Knudsen,
Artistic Director
Legacy Theatre

Welcome to Legacy!

Follow Legacy on social media!

 facebook.com/LegacyTheatreCT

 [@legacytheatrect](https://instagram.com/@legacytheatrect)

 [@legacytheatrect](https://twitter.com/@legacytheatrect)

Legacy Wi-Fi

Network: LTC GUEST
Password: GestWiFi!

Gift Certificates and Merchandise are Available at the Box Office!

At This Theatre



c. 1890s



c. 1930s



c. 1930-1940s

- 1866 A small, non-denominational church was built at 128 Thimble Islands Road in the village of Stony Creek in Branford.
- 1900 A fire damaged the property.
- 1914 The land is sold to William Howd and the foundations were laid for a silent movie theater called Idle Hour Moving Pictures.
- 1923 A theater group belonging to the Stony Creek Church of Christ called the Parish Players was forming.
- 1928 The Parish Players purchased the movie theater space, and repurposed it to “live” theater for the first time. Productions included the world premiere of *Death Takes a Holiday* as well as *Private Lives*, *Merrily We Roll Along* and *Pygmalion*.
- 1938 Orson Welles wrote and directed a silent film to accompany his direction of William Gillette’s 1894 comedy *Too Much Johnson* at what was now the Stony Creek Theatre.
- 1946 The theater building became home to Panix/Materna-Line, Inc., a designer and manufacturer of corsets and the like.



Stony Creek Theatre production of *Too Much Johnson* (1938)

At This Theatre



1946



c. 1980s - 2010s



2021

1961 Grace Weil established the space as the Stony Creek Puppet Museum with life-sized Sicilian puppets direct from performances in Italy. Grace Weil's son, Jim, and Italian Salvatore Macri, were the next to put their mark on the theater. With their rare and cherished skills of puppetry, the Italian puppets came to life.

1970s-2010s Classes and theater were in abundance under Jim Weil, Barry Fritz, the Alliance Theatre, Joe Davis and others. Passing on the legacy of theatre to others is a stronghold of the Legacy Theatre, which purchased this theater in 2013--and now you are part of its ongoing Legacy.

2021 Legacy Theatre, a repertory company with a conservatory arm, opened the restored theatre for performance and training. From nothing but a dream and a vision to now teams of committees, boards of directors and advisors, actors and teachers, this shoreline gem has been restored and revitalized. We at Legacy invite you to continue with us as we commemorate the past and spotlight the future of this special stage.



Jim Weil
(1960s-1970s)

Explore more about
AT THIS THEATRE
on the Legacy website!

Photos, video and more!

Scan This
QR Code:



Or visit
LegacyTheatreCT.org/history

wshu | Public Radio

“Love the
classical music ...
and NPR ... and local
news coverage.”

William & Susan, Wilton, CT

think. learn. share.

wshu.org



THE LEGACY THEATRE

JEFF PROVOST
Managing Director

KEELY BAISDEN KNUDSEN
Artistic Director

presents

A Christmas Carol

By KEELY BAISDEN KNUDSEN

Adapted from the book by CHARLES DICKENS

With Music by KEELY BAISDEN KNUDSEN and DAVID BELL

with

JAMES ANDREASSI* KEELY BAISDEN* KIERSTEN BJORK
PATRICK CLIFFORD DAN FRYE EMERY KNUDSEN
WYNTER KNUDSEN CHRIS LEMIEUX* MELANIE MARTYN
HALEY ORGAN JOSIAH ROWE SCOTT A. TOWERS

Master Carpenter RICH BURKAM

Scenic Artist LAURIE FLAHERTY

Original Scenic Painting DAVID SEPULVEDA, AMIE ZINER

Wardrobe Coordinator JIMMY JOHANSMEYER

Original Costume Design JUNE GOLD

Sound Designer ADAM JACKSON

Scenic & Lighting Designer JAMIE BURNETT

Assistant Stage Manager & Wardrobe Assistant COLLEEN CALLAHAN

Assistant Stage Manager LANE SHOEMAKER

Production Stage Manager T. RICK JONES*

Original Choreography JENNIFER BUONFIGLIO

Music Director DAVID BELL

Director KEELY BAISDEN KNUDSEN

November 29-December 10, 2023, The Legacy Theatre, Branford, CT

A CHRISTMAS CAROL is presented by arrangement with Rewls Productions, LLC

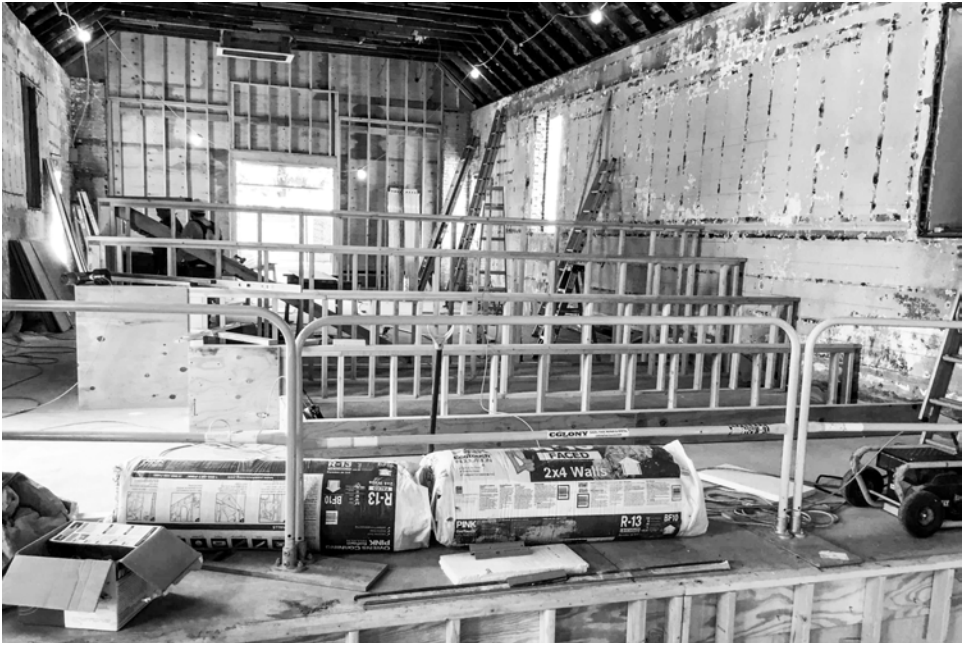
Costumes provided in part by PANTOCHINO PRODUCTIONS.

PANTOCHINO PRODUCTIONS costumes originally designed for the stage by Jimmy Johansmeyer



* The Actor appears through the courtesy of Actors' Equity Association, the Union of Professional Actors and Stage Managers in the United States.

The video or audio recording of this performance by any means is strictly prohibited.



WE ARE PROUD TO SUPPORT THE LEGACY THEATRE 2023 SEASON

2 Summit Place, Branford, CT 06405 • 203.643.1000 • www.orldconstruction.com





We know you're safeguarding **more than just your assets.**

**We can help you preserve and protect your wealth,
at your pace.**


Time to look out for more than your future? Our advisory practice is about the relationship we forge with you: conserving your assets, understanding the vision for your loved ones and seeing the big picture to fulfill your goals.

John H. Driscoll, Jr.
860.519.8183
jdriscoll@websterbank.com



WebsterBank®

websterbank.com

Investment, trust, credit and banking services are offered by Webster Private Bank, a division of Webster Bank, N.A. Investment products offered by Webster Private Bank are not FDIC or government insured; are not guaranteed by Webster Bank; may involve investment risks, including loss of principal amount invested; and are not deposits or other obligations of Webster Bank. Webster Private Bank is not in the business of providing tax or legal advice. Consult with your independent attorney, tax consultant or other professional advisor for final recommendations and before changing or implementing any financial, tax or estate planning advice. All credit products are subject to the normal credit approval process. Webster Bank, the Webster Bank logo and the W symbol are trademarks of Webster Financial Corporation and Registered in the U.S. Patent and Trademark Office. Webster Bank, N.A. Member FDIC. Equal Housing Lender  © 2022 Webster Financial Corporation. All Rights Reserved.

SHORELINE INSURANCE --- SERVICES INC



Steven P Cudgma, CLTC

***The Shoreline's Local Medicare
& Health Care Specialist***

Medicare – Individual & Small Group Health
Life – Disability – Long Term Care
Home – Auto – Commercial

Representing all the major carriers
Access Health CT Authorized Broker

NOW PROUD TO OFFER:
Home
Auto &
Commercial Plans

Located at:
556 Main Street, Branford, CT 06405

203-433-4969

www.shorelineinsurancect.com

steven.cudgma@shorelineinsurancect.com



"We do not offer every plan available in your area. Any information we provide is limited to those plans we do offer in your area. Please contact medicare.gov or 1-800-MEDICARE to get information on all of your options."

Cast

(in alphabetical order by actor)

Ebenezer Scrooge	JAMES ANDREASSI*
Mrs. Cratchit, Ghost of Christmas Past, Charity Woman, Beggar Woman	KEELY BAISDEN*
Fan, Mrs. Fezziwig, Charity Woman, Clock Chime Singer, Martha Cratchit, Party Guest, Caroler	KIERSTEN BJORK
Tiny Tim, Family Bonds Dancer	PATRICK CLIFFORD
Young Ebenezer, Fred, Gravedigger, Caroler	DAN FRYE
Boy on Christmas Day, Cratchit Child, Caroler	EMERY KNUDSEN
Clock Chime Singer, Beggar	WYNTER KNUDSEN
Marley, Mr. Fezziwig, Ghost of Christmas Present, Caroler	CHRIS LEMIEUX*
Belle, Scrooge's Niece, Ghost of Christmas Yet to Come	MELANIE MARTYN
Bob Cratchit, Gravedigger	JOSIAH ROWE

Swings: HALEY ORGAN & SCOTT A. TOWERS

*The Actor appears through the courtesy of Actors' Equity Association,
the Union of Professional Actors and Stage Managers in the United States.

A CHRISTMAS CAROL IS PERFORMED WITHOUT AN INTERMISSION.

Setting & Musical Numbers

London, England in the Victorian Era

<i>It's Christmas Time</i>	Company
<i>Humbug</i>	Young Ebenezer & Scrooge
<i>God Rest Ye Merry Gentlemen*</i>	Charity Women
<i>Humbug (Reprise)</i>	Scrooge
<i>Clock Chime Bells One</i>	Clock Chime Singers
<i>Family Bonds</i>	Ghost Of Christmas Past
<i>Sussex Carol*</i>	Mr. Fezziwig, Mrs. Fezziwig, Belle, Young Ebenezer, and Party Guests
<i>Set You Free</i>	Belle
<i>Clock Chime Bells Two</i>	Clock Chime Singers
<i>The Streets are Lovely*</i>	Ghost Of Christmas Present
<i>Traveling Song*</i>	Ghost Of Christmas Present
<i>Our Souls and Friends</i>	Ghost Of Christmas Present
<i>Clock Chime Bells Three</i>	Clock Chime Singers
<i>Canney Take It</i>	Gravediggers
<i>Canney Take It (Reprise)</i>	Scrooge
<i>Our Tiny Tim / Silent Night, Holy Night*</i>	Bob Cratchit, Mrs. Cratchit & Carolers
<i>Clock Chime Christmas Morning*</i>	Clock Chime Singers
<i>It's Christmas Time (Reprise)</i>	Company

All songs by Keely Baisden Knudsen and David Bell, except signified by *

God Rest Ye Merry Gentlemen (English traditional, Roxburghe collection)

Silent Night, Holy Night (Music by Frank Xaver Grover, lyrics by Joseph Mohr, 1818)

Sussex Carol (Luke Wadding, 1684)

Ding Dong Merrily on High (lyrics by George Radcliffe Woodward and music by Thoinot Arbeau, 1588)

Good Christian Men, Rejoice! (14th Century melody; lyrics by Heinrich Suso (1295-1366))

Who's Who



JAMES ANDREASSI (*Ebenezer Scrooge*) is delighted to be returning to Legacy Theatre, and to be part of Keely's production of *A Christmas Carol!* Jim has performed at theatres across the United States, including Palm Beach Dramaworks, Maltz Jupiter

Theatre, Long Wharf Theatre, American Repertory Theatre, Pittsburgh Public Theatre, Rep of St. Louis, Cleveland Playhouse, Shakespeare & Co., Pioneer Theatre Co., Lyric Stage of Boston, Merrimack Rep, Actors' Shakespeare Project, and Elm Shakespeare Co., among many others. In NYC he has performed at the Mint Theatre and the New York Theatre Workshop. Jim has taught acting, Shakespeare, and theatre studies at Southern Connecticut State University, Yale University, Quinnipiac University, and the Yale Center for British Art. Jim is the founder and artistic director emeritus of the Elm Shakespeare Company in New Haven, CT. He lives with his wife Margaret, their cats, Bambi and Rocco, and their exceptional dog, Winston, in Palm Coast, FL.



KEELY BAISDEN (*Director & Mrs. Cratchit, Ghost of Christmas Past, Charity Woman, Beggar Woman, Clock Chime Singer*) To read Keely's bio, please view page 23.



KIERSTEN BJORK (*Fan, Mrs. Fezziwig, Charity Woman, Party Guest, Clock Chime Singer, Martha Cratchit, Caroler*) To read Kiersten's bio, please view page 25.



PATRICK CLIFFORD (*Tiny Tim, Family Bonds Dancer*) is thrilled to be back at the Legacy Theatre to join a great group of people for this holiday tradition. He previously appeared as Chip in the Legacy's production of Disney's *Beauty and the Beast*. Patrick lives in Guilford, CT and is in the 8th grade at Adams Middle School. He attended Allegro Performing Arts Academy while in elementary school and realized his love of the stage! He has also performed with The Guilford Youth and Family Services theatre program where he played Chicken Soup in their rendition of *Really Rosie* and was Jojo in *Seussical JR.* In addition to acting, Patrick plays ice hockey with the Wallingford Hawks and loves gaming.



DAN FRYE (*Young Ebenezer, Fred, Gravedigger, Caroler*) is thrilled to be back at Legacy, returning for another year of *A Christmas Carol*. Dan is a Branford native, and received a BFA in Acting from the University of South Dakota. His recent credits include

Disney's *Beauty and the Beast* (Beast) and *The Play That Goes Wrong* (Trevor) with the Legacy Theatre, and *Joan Joyce!* (Mailman Marinaro/Joe Joyce/Ted Williams) with Seven Angels Theatre in Waterbury. Thanks to the Legacy crew for a great send-off to a stellar season!



EMERY KNUDSEN (*Boy on Christmas Day, Cratchit Child, Caroler*) began performing on the stage in *Snow White and the Seven Dwarfs*. She's also been cast as the title role in *The Little Mermaid*, as Christopher Robin in *The Tales of Christopher Robin and Winnie-the-Pooh*, as Peter Pan in *Peter and Wendy*, and as Tiny Tim, Boy on Christmas Day, Ensemble Child, and Caroler in Legacy's *A Christmas Carol* (2021 & 2022). She enjoys singing, writing music, and creating original stories and artwork for a comic series.



WYNTER KNUDSEN (*Clock Chime Singer, Beggar*) is pleased to join the cast of *A Christmas Carol* this year! Past roles have included John in *Peter and Wendy* with the world-famous Pilobolus dancers, and she has performed numerous original and scripted pieces with the Wheel Life Theatre Troupe in various locations, including two summers with the International Festival of Arts and Ideas.



CHRIS LEMIEUX (*Marley, Mr. Fezziwig, Ghost of Christmas Present, Caroler*) is thrilled to return to Legacy's holiday classic for a third time! Other past Legacy credits include: *A Midsummer Night's Dream* (Bottom), *You're a Good Man, Charlie Brown* (Charlie Brown),

and *The Play That Goes Wrong* (Robert). Lemieux is a Branford native and graduated from Pace University with a BFA in Acting. He is a proud member of the Actors' Equity Association. He directs and has performed in productions with Branford Parks and Recreation Shoreline Theatre Company. He is also the director of the Walsh Intermediate School spring musical. Many thanks to Keely and ever thankful to Mom, Dad, Danny, Allie, and Ricci.

Who's Who



MELANIE MARTYN (*Belle, Scrooge's Niece, Ghost of Christmas Yet to Come*) is thrilled to be returning to the Legacy stage! Born and raised in Maryland, she grew up primarily as a dancer before going off to Boston College to earn her BA in Theatre Arts. She's lived and trained in London, New York City, Los Angeles, and Seattle. Past Legacy credits include Belle in Disney's *Beauty and the Beast*, Ophelia in *Hamlet*, Amanda in *Private Lives*, and Corie in *Barefoot in the Park*. She also works in film as an actress and producer and currently has many projects in development to be released in the near future. She and her husband currently live in New York City with their dog, and were ecstatic to welcome their daughter into the world in May! IG: @Melanie_martyn.



JOSIAH ROWE (*Bob Cratchit, Gravedigger*) Returning for the third time as Actor 1/Bob Cratchit, Josiah is delighted to be a regular at Legacy Theatre, where he has played roles ranging from Claudius in *Hamlet* to Tom Buchanan in *The Great Gatsby: A Live Radio Play* to Cogsworth in Disney's *Beauty and the Beast*. Legacy's young audiences might also remember him as Custard the Dragon or Winnie-the-Pooh. Other past roles include Atticus, *To Kill a Mockingbird* (Landmark Community Theatre, Thomaston); Scarecrow, *The Wizard of Oz* (Thomaston Opera House); Bhaer, *Little Women* (Hartford Children's Theatre); and the Pirate King, *Pirates of Penzance* (Alliance Theatre). However, his favorite role is Daddy to Ashlin (11), Diana (9) and Verity (4). Love and thanks to Erin.



HALEY ORGAN (*Swing*) [she/her] is a senior Theater major with a History minor at Quinnipiac University from Plymouth, Massachusetts. She is grateful to have the opportunity to participate in this production. She has been involved in theater productions her entire life and has had experience with acting, writing, designing sets and costumes, and being a part of stage crew. She is excited to have this opportunity as a swing performer in this classic production. In the future, she would like to continue both performing and designing, pursuing a career in either or both elements of theater. She dedicates her participation in this performance to her late grandmother, Sharon Organ, with love.



SCOTT A. TOWERS (*Swing*) is a Branford native, and the current Producer for the BHS Performing Arts Spring Musicals. Scott obtained his Bachelor of Science in Music Education Voice Concentration from WCSU, where he was classically trained in opera, and was the Principal Tenor. He has his Master of Science in Higher Education Administration from Post University and currently works full time at WCSU. Previous performing credits: Gaston - Disney's *Beauty and the Beast* (Legacy Theatre), Reverend Shaw Moore - *Footloose*, Comfort Counselor - *The 25th Annual Putnam County Spelling Bee*, Roger De Bris - *The Producers*, Corny Collins - *Hairspray*, Tamino - *The Magic Flute*, Rinuccio - *Gianni Schicchi*, and Frederic - *The Pirates of Penzance*. Scott is thrilled to be a member of the Legacy Theatre Family.

DAVID BELL (*Music Director*) has been active regionally for many years as a musician and actor. He previously appeared on the Legacy stage as Maurice in Disney's *Beauty and the Beast* and George Wilson and other characters in *The Great Gatsby: A Live Radio Play*. He was the music director for three Legacy productions: *Just Desserts*, *Joan Joyce!*, and *A Christmas Carol* (for which he also arranged the music). This is one of his first outings as a composer/arranger, and he has thoroughly enjoyed working with Keely and enhancing her beautiful melodies and lyrics. As an actor, he has appeared at Ivoryton Playhouse (*Children of Eden/The Father; Taming of the Shrew/Lucentio; You're A Good Man, Charlie Brown* Schroeder), with the Orange Players (*Guys and Dolls/Sky Masterson*), East Lyme Regional Theatre (*Footloose/Rev. Moore*), Center Stage (*I Hate Hamlet/John Barrymore; Anything Goes/Evelyn Oakleigh*), and many others. He won an Outstanding Contribution by a Leading Actor award for his performance at the 2007 New Works New Haven Festival. In his other lives, David is an accompanist, singer, church organist, choir director, hiker, biker, and cat owner (or perhaps the cat owns him).



Crest Lincoln
applauds the shoreline
and the arts.



CREST LINCOLN
O F W O O D B R I D G E

185 Amity Road, Woodbridge, CT
203-389-7100 www.crestwoodbridge.com

Who's Who

JAMIE BURNETT (*Scenic & Lighting Designer*) is a graduate of Carnegie Mellon University, recipient of the 2005 New Haven Arts award, and Founding member of The Elm Shakespeare Company. Lighting Designer at Elm Shakespeare for 26 years and Set Designer until 2009. Lighting Design credits include International Festival of Arts and Ideas 2018, *Requiem for an Electric Chair*; Iseman Theater 2017, *Never Stand Still*. CCT: *Skeleton Crew*, *Rasheeda Speaking*, *Jesus Hopped the A Train*, *Sunset Baby*, *Topdog/Underdog*. SCSU: *Stop Kiss*, *Much Ado About Nothing*, *The Boyfriend*, and *Our Country's Good*. SHU: *In The Heights*, *Jesus Christ Superstar*. Citywide Open Studios: New Haven Armory; Projects2k: Stamford Train Station Façade Lighting; Producer/Lighting Designer/Production Manager for *Terra Tractus (The Earth Moves)*, (2005) *Terra Mirabila*, (2001) *Terra Lumina* and *Terra Continuum* (1999): performed in the Stony Creek Granite Quarry; PNM's Branford Luminata (2010) lighting Branford Green Town Hall. His company, Luminous Environments, specializes in theater and TV studio renovations and public art installations involving specialized lighting. Recent projects: Branford HS Theater, Fairfield Community Theater, and Legacy Theatre.

ADAM JACKSON (*Sound Designer*) is thrilled to have been a part of Legacy's third season! Adam has worked on over 50 productions as an actor and designer. He has done technical theatre design work for Walsh Intermediate School, the Branford High School Fall Play and Spring Musical, Ivoryton Playhouse, WCSU Opera, Elm Shakespeare Company, and Seven Angels Theatre. He is also the resident technical supervisor at Shoreline Theatre Company where he particularly enjoys working on the summer camp shows. Adam recently graduated from Western Connecticut State University with a BS in Music Education and a concentration in classical trombone. He runs sound for The River Church in Danbury and recently completed a job long-term substitute teaching band at Jack Jackter Intermediate School in Colchester, CT.

RICH BURKAM (*Master Carpenter*) came to Connecticut to study music and music recording at UNH. He played in bands such as 4:20, Space Cushion, and Over The Line. His studies continued, learning to be a luthier under Barry Lipman and Chris Tatalias, giving him a taste for fine woodworking. Richard now owns a woodshop that makes fine furniture, in a space which is shared with lighting designer Jamie Burnett. Together they have built sets for many production companies, including Elm Shakespeare, Yale Baroque Opera Project, and many small black box theater productions.

T. RICK JONES (*Production Stage Manager*) A graduate of London's Mountview Theatre School, T. Rick's face is starting to become a familiar one around here! This is his second *A Christmas Carol*, and since last year he's also SMed Yale Opera's *The Rape of Lucretia* here and also

Masters of Puppets. His career spans 30 years, with other credits including Regional: White Heron Theatre Company (Resident SM/Production Manager); Lyric Stage Company of Boston (PSM); White Plains Performing Arts Center (PSM); Colonial Theatre – Shakespeare in the Park (PSM, Production Manager, Assistant Producer, Production Photographer); The Ivoryton Playhouse (PSM); Seven Angels Theatre (PSM). Off-Broadway: *Sessions: The Musical* (PSM); *A Night at the Carlyle* (PSM); *Yohen* (PSM). T. Rick is also the Managing Editor of the online outlet *Daily Star Trek News* and a Contributing Writer for *Sherlock Holmes Magazine*.

COLLEEN CALLAHAN (*Assistant Stage Manager & Wardrobe Assistant*) is thrilled to be returning to the Legacy Theatre Team! She is a recent graduate of Western Connecticut State University with a degree in Theatre Arts. Her previous experience includes Legacy Theatre's *The Musical of Musicals (The Musical!)* (Props Designer & Assistant Stage Manager), *The Play That Goes Wrong* (Props Designer), Disney's *Beauty and the Beast* (Assistant Props Designer & Wardrobe Supervisor), and *A Christmas Carol* (Assistant Stage Manager & Wardrobe Assistant); Yale Opera's *The Rape of Lucretia* (Run Crew); and WCSU's *Hand To God* (Assistant Costume Designer).

LANE SHOEMAKER (*Assistant Stage Manager*) is thrilled to return for their second year backstage for *A Christmas Carol*. They started the year constructing and painting props for escape rooms. Then they were down in the beautiful mountains of Western North Carolina to be the Assistant Props Manager for the Flat Rock Playhouse's 2023 season. Lane is excited to be back home for the holidays and working with this wonderful cast and crew again.

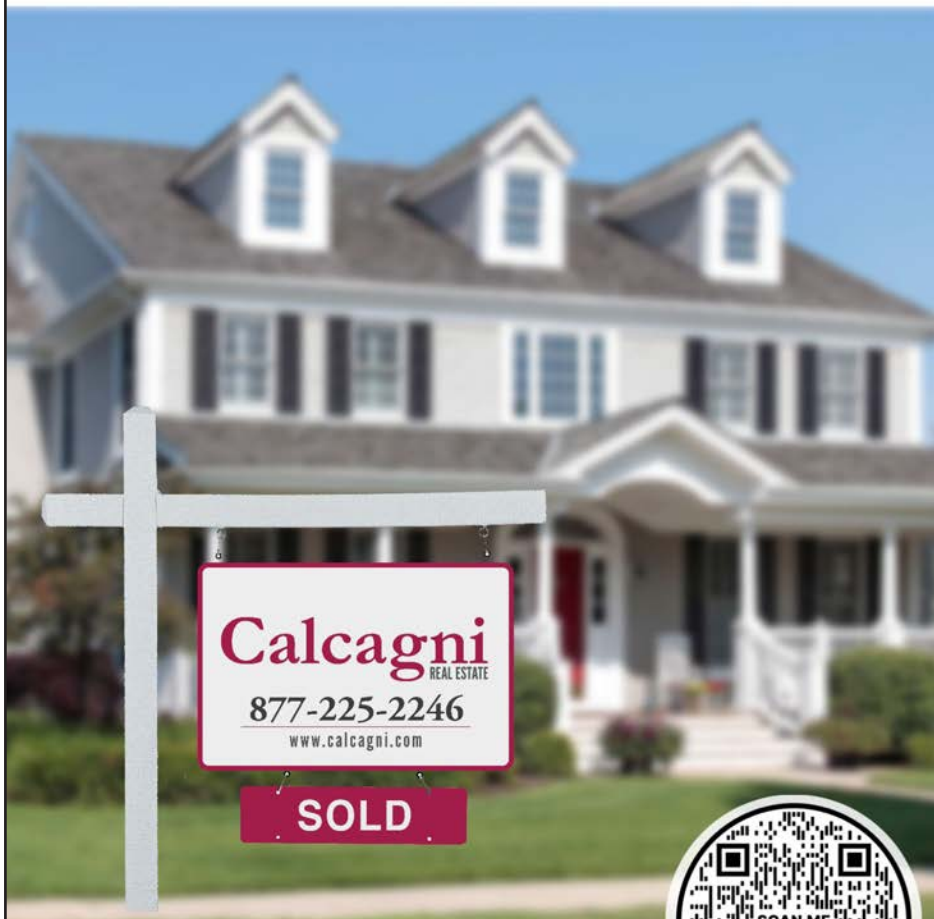
ACTORS' EQUITY ASSOCIATION (AEA) was founded in 1913, and AEA represents more than 50,000 actors and stage managers in the United States. Equity seeks to advance, promote and foster the art of live theatre as an essential component of our society. Equity negotiates wages and working conditions, providing a wide range of benefits, including health and pension plans. AEA is a member of the AFL-CIO, and is affiliated with FIA, an international organization of performing arts unions. The Equity emblem is our mark of excellence. www.actorsequity.org

SPECIAL THANKS FOR A CHRISTMAS CAROL

Tony Adinolfi, Jennifer Buonfiglio, Emmett Cassidy, Betzabeth Castro, Maeve Cunningham, June Gold, Adam Jackson (Instrumentation), Liviana Knudsen, Saviah Knudsen, Callie Liberatore, Pantochino Productions, David Sepulveda, Elm Shakespeare Company, Nancy Smith, Amie Ziner

Your home is worth a lot to you.

When you are ready to make a move, don't sell yourself short.



Scan the QR code with your phone's camera to receive a complimentary Equity Analysis of your home.



Calcagni

REAL ESTATE

Selling homes & helping CT's home buyers for over 50 years.

 /CalcagniRealEstate

calcagni.com

 /CalcagniRealEstateCT

Legacy Who's Who

LEGACY THEATRE STAFF

Managing Director	JEFF PROVOST
Artistic Director & Co-Founder	KEELY BAISDEN KNUDSEN
Co-Founder	STEPHANIE STIEFEL WILLIAMS
Business Manager	KIERSTEN BJORK
Production Manager	SARAH PERO
Development Manager	ANNE RUNOLFSSON
Producer of Broadway Concert Series & Community Arts Coordinator	COLIN SHEEHAN
Community Outreach	MARY LEE WEBER
Box Office Manager	NICK FETHERSTON
Box Office Associate	MELISSA STARKWEATHER
Front of House Manager & COVID Safety Manager	JEFF ZEITLIN
Front of House Alternates	RICH AFRAGOLA, KIERSTEN BJORK, CHRIS LEMIEUX, KELSEY MULLIGAN, KENNY PELPHREY, NICK FETHERSTON, MARY LEE WEBER
Graphic Designer	JOE LANDRY
House Photographer	SAMUEL BIBBINS

BOARD OF TRUSTEES

Stephanie Williams, *President*
Jana Shea, *Vice President*
Kathleen Murphy, *Secretary*
Luke Williams, *Treasurer*
Damian Doria
Katina Gionteris
Charles Grady
Brian Knudsen
James Roday Rodriguez
Tom Shea
Jeff Provost, *Ex-Officio*

SPECIAL THANKS

Legacy Volunteers, TYCO,
The Stony Creek Community, The Town of Branford,
The Bjork Family, Brian W. Knudsen, Nancy Smith,
Don Weinbach, Joe Landry,
Christensen Landscaping (Lawn Company),
Auntie Bella (Cleaning)

Contact Legacy Theatre

Box Office: (203) 315-1901 (Mon-Fri 10am-3pm)

Email: Info@LegacyTheatreCT.org

Website: www.LegacyTheatreCT.org

Gift Certificates available online or through the Box Office.

**The arts make a bridge
ways that nothing else**



GSB, the Branford Community Foundation, and The Guilford Foundation are proud mainstage season sponsors of the *Legacy Theatre*.

across this world in
can.” – *Julie Andrews*



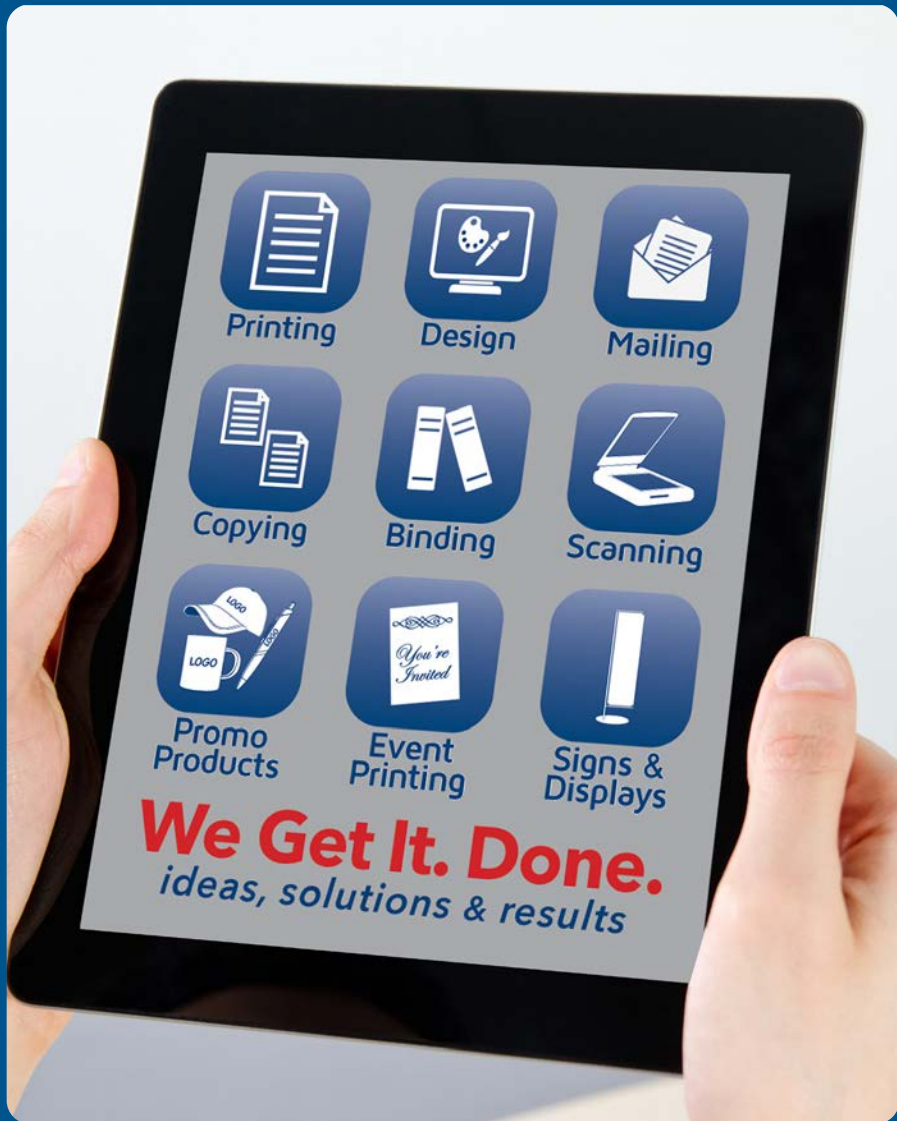
BRANFORD
Community Foundation



Sponsored by the Branford Community Foundation and The Guilford Foundation with funding provided by GSB.

TYCOPrint

making *print* happen



New Haven
296 Elm Street • 203.777.TYCO

Online 24/7
www.TycoPrint.com •   

Branford
618 Main Street • 203.481.TYCO

Legacy Who's Who



JEFF PROVOST (*Managing Director*) was a Founding Advisory Committee member of the Fairfield Theatre Company (FTC), eventually becoming their first Managing Director while successfully leading their "FTC Moves Downtown" capital campaign. He

was the first Director of Marketing & Public Relations at Westport Country Playhouse during Joanne Woodward's earliest seasons as Artistic Director and held the same title at Hartford Stage during Michael Wilson's new artistic leadership. He created and managed the subscription-driven Family Broadway Series at the "new" Oakdale Theater, during the time that they became the largest theatre in New England. Jeff held management positions at the Williamstown Theatre Festival and Yale Repertory Theatre, as well as Off-Broadway and on, with the 1994 Tony-award-winning production of *Medea*, featuring Dame Diana Rigg. As an arts marketing consultant, Provost was invited to be a guest lecturer/presenter for the Connecticut Commission on the Arts.

After holding management positions in the non-profit arts and commercial entertainment industries, Provost joined Red 7 Media in Norwalk where he helped launch the Event Marketing Institute. He founded PRO Management LLC in 2015 where he worked with a wide variety of clients including the Experiential Designers & Producers Association, the Healing NET Foundation, and McDonald's.

He completed his undergraduate degree at The Catholic University of America in Washington DC., followed by graduate work at Yale University, where he earned his master's degree in Theatre Management. When not enjoying his lifelong passion for live theatre, Provost volunteers his time with the Make-A-Wish Foundation's CT Chapter where he performs magic under the stage name of "Mr. Jeffo". Jeff and his wife Traci were happy to become Branford residents earlier this year and are enjoying being a part of the shoreline community.



KEELY BAISDEN KNUDSEN (*Artistic Director & Co-Founder*) An award-winning director, Keely has performed, directed, and choreographed internationally in plays, musicals, operas, and dance companies in hundreds of theatrical productions

and has performed in 48 of the United States and in the UK. Realizing her vision of a new theatre company on the Connecticut Shoreline, Keely's ideals of inspiring, inclusive work that uplifts the human spirit and connects communities formalized in the creation of the Legacy Theatre with Co-Founder Stephanie Stiefel Williams, a performing colleague and dear friend.

Keely has directed, choreographed, and taught a myriad of performing arts courses at such institutions as Quinnipiac University, Yale University, Fairfield University, Hartt School of Drama, Southern Connecticut State University, Westminster College, and was the Director of Education of New Haven's acclaimed Elm Shakespeare Company for several years. Additionally a composer/lyricist and playwright, she is a member of ASCAP and a writer/curator for Rewls Productions (www.rewlsproductions.us). Her directing has been heralded by the *Arts Paper* as "...visually striking, emotionally moving" and "captivating" and of her direction of *Hamlet* it was said, "Knudsen has made the notoriously difficult Shakespearean language accessible." Her creation of the Wheel Life Theatre Troupe has been an especially rewarding program as she acts and directs with those who ambulate with crutches and wheelchairs.

Her BFA is from New York University's Tisch School of the Arts, at which she graduated first in the class, and she received her Masters Degree in Drama on full scholarship from The Royal Scottish Academy of Music and Drama in Glasgow. Keely, her husband Brian, and five children (Saviah, Liviana, Wynter, Emery, and Reeves) reside in Guilford, CT.



STEPHANIE STIEFEL WILLIAMS (*Co-Founder & Chairperson of the Board*)

is an active and versatile performer in musicals, concerts, and plays and has appeared in numerous locations throughout the Northeast. A member of Actors' Equity Association, she has appeared professionally in a variety of roles at venues such as Broadway's Marriott Marquis, Legacy Theatre, Hartford Stage Company, Foxwoods' Fox Theatre, Atlantic City's Tropicana, Turning Stone Casino, and the Garde Arts Center. Among these roles, her favorites include Aldonza in *Man of La Mancha*, Anita in *West Side Story*, Lola in *Damn Yankees*, Maria in *The Sound of Music*, and Guenevere in *Camelot*. Although her professional focus has been in musical theatre, she also has been engaged frequently as a concert soloist, as well as an a cappella ensemble singer. Locally, Stephanie is a proud founder, repertory member, and trustee president at Legacy Theatre where she has starred in the critically-acclaimed productions of *The Musical of Musicals (The Musical!)*, *I Do! I Do!*, and *Barefoot in the Park*. She also appeared as a featured vocalist in the wildly popular *Mack is Back!*

In addition to her work with Legacy, Stephanie sits on the Performing Arts Advisory Council at the University of Notre Dame and has been a member of the Board of Trustees at the Goodspeed Opera House. She has become involved on a producing level with critically-acclaimed productions



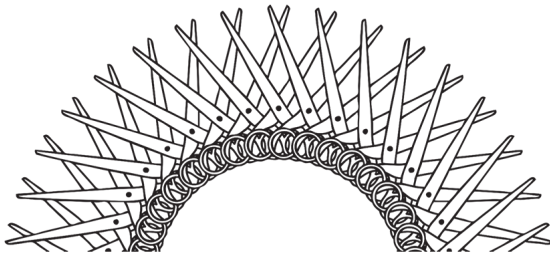
Gaylord
Specialty Healthcare

Physical Therapy

**EXPERTS IN
SPORTS MEDICINE**

Cheshire · Cromwell · Madison
· North Haven · Wallingford

rehabwithapro.org



SALON ZENA

LIGHTHOUSE SQUARE
705 BOSTON POST RD UNIT 7A
GUILFORD, CT 06437

SALON.ZENALLC@GMAIL.COM
203.533.7288 | 203.533.7936

Legacy Who's Who

of *Gypsy* and *Showboat* in London's West End, the revival of *Sweeney Todd* in New York, and Broadway's *Escape to Margaritaville*. As a former Miss Connecticut, she represented our state at the Miss America Pageant in Atlantic City. She holds a Bachelor of Arts, magna cum laude, from Fairfield University and a Juris Doctorate with honors from the University of Connecticut School of Law. Stephanie is the proud mother of two adult children, Valerie and Rick, and lives in Guilford with her wonderful husband, Luke.



KIERSTEN BJORK (*Business Manager*)

has performed with companies such as Legacy Theatre, Seven Angels Theatre, Shoreline Theatre Company, Theatre Fairfield, and more, having worked on dozens of productions both on and offstage. Favorite performing credits include *Footloose* (Ethel McCormack), *The Spitfire Grill* (Percy), Disney's *Beauty and the Beast* (Enchantress, Madame D'Arque), *[title of show]* (Susan – BroadwayWorld Award Nomination: Best Performer in a Musical), *Joan Joyce!* (Young Joan Joyce – BroadwayWorld Award Nomination: Best Performer in a Musical), *Chicago* (June/Squish*), *A Christmas Carol* (Fan/Mrs. Fezzwig/Others), and *A Princess Tea* (Evil Queen). Kiersten has also worked on numerous productions from the creative and technical sides, with favorites being *Rabbit Hole* (Scenic Designer), *The Curious Incident of the Dog in the Nighttime* (Master Carpenter), and *I Do! I Do!* and *The Last Five Years* (Assistant Stage Manager).

Kiersten has been the Theatre Manager at Legacy for the past three seasons and is excited for all to come in 2024! She is a 2021 graduate of Fairfield University, graduating summa cum laude and Phi Beta Kappa with degrees in Theatre and English.

In addition to her work with Legacy, Kiersten is also the Marketing and Communications Specialist for the Branford Community Foundation, an a cappella ensemble singer with the Royal Court Singers, a Book Reviewer for Booktrib, and a Theatre Critic with the Connecticut Critics Circle. You can read her theatre reviews at whitebirchblog.com. She also does freelance theatre work as a stage manager, technician, and carpenter for the Quick Center for the Arts and Theatre Fairfield. She thanks her parents, Christian, Carlin, Sarah, and Nick for their constant support.



SARAH PERO (*Production Manager*)

Born and raised in New Haven, CT, Sarah has been involved with local community and professional theatre for 20+ years. Acting at the age of 10 and directing at 16, Sarah received her BFA in Theatre, with a concentration

in directing, from the University of Rhode Island. Right after college, Sarah was a part-time drama teacher in New Haven Public Schools and also taught theatre classes with Performing Arts Programs (South Windsor, CT). Sarah then worked at the Music Theatre of CT (Norwalk, CT) School of Performing Arts, wearing many hats as Administrative Manager, Teaching Artist, Director, Music Director, and Choreographer for the school. Sarah also managed the Box Office and was the Resident Sound Designer for MTC's Professional Main Stage. Following MTC, Sarah worked as Administrative Manager at the Downtown Cabaret Theatre (Bridgeport, CT). As a Production Stage Manager for various Theatre Productions in Rhode Island and Connecticut, some of her favorites include: *Tick, Tick Boom!*; *Little Women: The Musical*; and *You're a Good Man, Charlie Brown*. Sarah started Stage Managing at Legacy Theatre in 2021 and officially joined the team as the full-time Production Manager in 2022.



ANNE RUNOLFSSON (*Development Manager*)

has entertained audiences worldwide for the past 35 years. A veteran of the stage and concert venues, her Broadway and National tour appearances include: *Phantom of the Opera* (Carlotta), *Victor/Victoria* (Standby for Julie Andrews and Liza Minnelli), *Les Misérables* (Fantine), *Cyrano: The Musical* (Roxane), *The Secret Garden* (Lili), *Aspects of Love*, and *James Joyce's The Dead* (Gretta). As a soloist, Anne has performed at such iconic venues as The Hollywood Bowl, Carnegie Hall, Radio City Music Hall (with tenor José Carreras), The 02 Arena (London, with Julie Andrews), The Concertgebouw (Amsterdam), The Kennedy Center, Wolf Trap and countless others. Anne was awarded New York City's prestigious MAC award for Best Female Singer. Her cabaret appearances include *Birdland*, *54 Below*, *The Green Room 42*, *92nd Street Y*, *The Russian Tea Room*, *Rainbow and Stars*, and *Hollywood's Cinegrill and Gardenia*. Show recordings include: *Les Misérables* International Cast, *Listen to My Heart*, and *You Oughta Be On Broadway*, and a solo album *At Sea*. Anne co-wrote and performs in two shows with singer/actress daughter Tess Adams; *The Story Goes On: A Broadway Family Journey* and *Heroine's Song*. Anne made her directorial debut in December 2021 in Los Angeles with *My Unauthorized Hallmark Movie Musical*. She has also appeared on NBC's *The Blacklist*. Anne is principal partner of Runolfsson Entertainment which includes "Sing With Anne," a vocal coaching practice. She has taught voice and performance at the Orange County School for the Arts in California and New York University.



LOCALLY OWNED AND OPERATED

Full Service:

- Framing
- Millwork
- Trusses
- Engineered joists
- Engineered beams
- Windows
- Kitchens
- Trim



Our professional sales and service staff work hard to ensure timely deliveries and efficient order production. We want your business!

1.800.445.8623

381 State Street, North Haven, CT

www.nationallumberinc.com

Legacy Who's Who



COLIN SHEEHAN (*Producer of Broadway Concert Series & Community Arts Coordinator*) is a local arts enthusiast and serves as the Arts, Culture & Special Events Coordinator for the Town of Branford, Director of The Branford High School Performing Arts'

Spring Musical, and Co-Founder and Co-Artistic Director of Branford Parks and Recreation Shoreline Theatre Company. He graduated from Branford High School and continued his studies at Wagner College with a B.A. in Theatre and Speech Performance. In 2003, he made his Broadway debut in the closing night production of *Les Misérables*. In '99, Colin appeared numerous times on *The Rosie O'Donnell Show* and worked for three seasons on *The Wendy Williams Show*. Colin has produced, directed, hosted, and performed in the tri-state area and abroad with Broadway Cruises, Nickelodeon Cruises, and R Family Vacations Cruises. Colin is a philanthropist and has hosted, produced and raised funds and awareness for many organizations in Branford and beyond.



MARY LEE WEBER (*Community Outreach*) is a Marketing and Communications consultant who has lived in Branford since 1988. She held the position of Director of Marketing and Community Development for the ABC affiliate WTNH-8 for 17 years where she

was responsible for non-traditional revenue and community partnerships. With a local creative team she Executive Produced a short documentary for the Stony Creek Museum called *Born at The Water's Edge*. It features interviews and information about the Thimble Islands and the history of Stony Creek including brief segments about Legacy Theatre, the Stony Creek Fife and Drum Corps and the Quarry. Mary Lee also helped with the Legacy Theatre productions while they were in residence at the Stony Creek Museum in 2018-19. She joined Legacy to help with marketing and community outreach and is thrilled to play even a small part in helping Legacy bring theatre back to Stony Creek.



NICK FETHERSTON (*Box Office Manager*) When not in the Box Office, Nick is an actor operating out of the New Haven area. He is a graduate of Quinnipiac University with a degree in Theater Studies and is also an alumnus of The National Theater Institute at the

Eugene O'Neill Theater Center. His Legacy Theatre credits include playing Jonathan in *The Play That Goes Wrong*, Lysander in *A Midsummer Night's Dream*, and Rosencrantz in *Hamlet*. Other acting credits include playing Mack in *Fairview* (Collective Consciousness Theatre), Don John/The Sexton in *Much Ado About Nothing* (Capital Classics),

Albert in *Goldfish* (New Haven Theater Company), and Mr. Bingley in *Pride and Prejudice* (The Little Theatre of Manchester). Nick is also a standardized/simulated patient for Yale University and Quinnipiac University, where he uses his acting skills to assist in the training of medical students. Nick also teaches a variety of acting classes here at The Legacy Theatre. Website: nickfetherston.com



MELISSA STARKWEATHER (*Box Office Associate*) An enthusiastic theatre lover, Melissa Starkweather has accrued a wide variety of experiences throughout the country and abroad. From her early years performing children's roles with

Tulsa Opera to her current work as a choral singer and music teacher, Melissa is dedicated to the advancement of live performance in our community. Melissa earned her Bachelor of Music degree in Vocal Performance with a minor in Theatre from Belmont University, where she interned with Nashville Opera's education department. During her time in Nashville, she worked as a Box Office Assistant at Tennessee Performing Arts Center and developed a love of helping to provide community members with an all-around positive theatre experience. She then sought out a Master of Music degree in Opera Theatre at University of South Carolina, where she began working as an administrative assistant and stage manager for FBN Productions, a local children's opera company, and furthered her box office and front of house experience at Koger Center for the Arts. After graduating, Melissa has worked as a freelance stage manager, performer, and classroom music teacher. Recently, she served as a Production Management Apprentice for Berlin Opera Academy's productions of *Le Nozze di Figaro*, *The Crucible*, and *Die Zauberflöte*. Some of her favorite roles include Rosalinde in *Die Fledermaus* (Belmont Opera Theatre), Susannah in *Susannah* (Opera at USC), Ham in *Noye's Fludde* (Tulsa Opera), and Ghost of Christmas Past in *A Christmas Carol* (American Theatre Company). Additionally, Melissa will soon be singing in Handel's *Messiah* with New Haven Symphony Orchestra. Melissa is so excited to join the team at Legacy Theatre and hopes to continue to provide patrons with an excellent, uplifting experience at the theatre.



JEFF ZEITLIN (*Front of House Manager*) A long-time resident of Guilford, CT, Jeff's love of theatre was taken to the next level when his daughter was a part of the Guilford High School Theatre Arts program. Jeff served as a Board Member of the school's Theatre Arts

Parents Support. He then became the Box Office Manager and Front of House Advisor for GHSTA. He continues in that volunteer role today. Along with his wife, Alyson, he was an usher at The Ivoryton Playhouse. Most recently, he



**FOR AS LONG AS WHEELS HAVE
ROLLED ALONG ROADWAYS,
AUTOMOBILES HAVE BEEN THE
INSPIRATION FOR GREAT THEATRE.**

Be it the fantastical flying car in *Chitty Chitty Bang Bang*, the pride of the T-Birds in *Grease* or, more recently, a gleaming, stainless steel DMC DeLorean in the Broadway revival of *Back to the Future*, automobiles have always played a starring role in theatre. At Palumbo's, we give your vehicle the red carpet treatment whether it's a rising star or a gracefully fading light of Broadway. Enjoy the show!

**BEST WISHES TO
THE CAST AND CREW FROM
THE ENTIRE PALUMBO FAMILY.**



1 (203) 453-1788 palumbosautomotive.com

Legacy Who's Who

was a House Manager at The Katherine Hepburn Cultural Arts Center ("The Kate") in Old Saybrook. He first became aware of The Legacy Theatre when attending a couple of fundraisers a few years ago. He was taken by the plans for the historic building and the prospect of bringing high quality Broadway productions and performers to the shoreline. Jeff's community involvement also extends to Guilford A Better Chance where he is a member of the Board of Directors. When not at the theatre, Jeff is Loyalty Manager for IKEA in New Haven, focusing on Public and Community Relations. Jeff looks forward to welcoming theatre-goers from near and far to The Legacy Theatre!



JOE LANDRY (*Graphic Designer*) has had the pleasure of being part of the Legacy family for the past number of years. He has designed for several theatres, including MTC, Westport Country Playhouse, Fairfield Theatre Company and Pantochino Productions.

As a playwright, his plays have been produced throughout the world, including right here at Legacy, where his adaptation of *The Great Gatsby: A Live Radio Play* had its professional premiere last season. www.joelandry.com

Support Legacy Theatre

As a 501(c)3 nonprofit organization, Legacy Theatre relies on the generosity of our donors and supporters to bring performances, classes, job opportunities and more to the shoreline community. Please consider making a tax-deductible donation today, or supporting us through other avenues. **Please contact Kiersten Bjork at (203) 315-1901 or kiersten@legacytheatrect.org with any questions.**



NAMING OPPORTUNITIES

Leave your Legacy in this historic, fully restored, state-of-the-art, gorgeous theatre. Naming Opportunities are still available for seats and more.



DEDICATE A PERFORMANCE

Honor someone special in your life by dedicating a performance at Legacy Theatre. Dedicating a performance is truly a unique way to commemorate a birthday, anniversary, or achievement. (Please Note: Tickets are not included in this Dedicate a Performance Program.)



DONATE

Visit www.legacytheatrect.org/donate
Scan to learn more and to partner with us!

Legacy Theatre is a tax-exempt, 501(c)(3) organization and donations are tax-deductible to the fullest extent allowed by law.

INCREASE YOUR EMPLOYABILITY WITH



ALBERTUS

CAREER EXCELERATOR

Google  Meta  IBM  INTUIT  SAS



Albertus graduates are even more marketable in a highly competitive job market.

We've curated a list of stackable micro-credential and certificate programs in high-demand fields to complement skillsets and bridge the gap between knowledge and experience.... preparing you for career success.

Career eXcelerator is available to full-time Albertus students at *no additional cost*. They are self-paced, short-term, fully online, and taught by industry experts from corporations such as Google, IBM, Intuit, Meta, Salesforce, SAP, and Tally in a wide array of programs ranging from Google Data Analytics and Meta Social Media Marketing to Salesforce Sales Operations and Tally Bookkeeping.

**The value of an Albertus education just got stronger.
Level up and rise to the top of the applicant pool with
Albertus Career eXcelerator.**



ALBERTUS MAGNUS COLLEGE

We have faith in your future.

700 Prospect Street, New Haven • albertus.edu/excelerator

LEGACY THEATRE
ANNUAL
GIVING
SOCIETY

Thank you for being a spark!

This year, a wonderful group of arts lovers became members of the Legacy Theatre's Annual Giving Society.

These people are committed to sustaining a vital part of humanity. They know the power of theatre in engaging our imagination and creating community.

Their generosity will provide the operating and programmatic funding needed for our theatre to thrive.

We're so grateful to every member of the Annual Giving Society!

And a special thanks to the anonymous donor who matched every gift received by August 31st.

It's not too late to join this group!
You can become a member of the Annual Giving Society with an annual gift of \$1000 or more.

Visit the Box Office, Call (203) 315-1901,
Give Online at LegacyTheatreCT.org, or
Scan the Code on this Page.



Thank You!



AT&T

Legacy Theatre Donors

Legacy Theatre is grateful to the many contributors whose generous gifts provide vital resources for our performances, artists, and services.

THE ANNUAL GIVING SOCIETY

FOUNDER (\$25,000 and above)	PRODUCER (\$10,000-\$25,000)	DIRECTOR (\$5,000-\$9,999)	ACTOR (\$2,500-\$4,999)
Atlas Healthcare The Martyn Foundation The Seedlings Foundation Tom and Jana Shea Luke and Stephanie Williams	Roslyn Milstein Meyer James Roday Rodriguez	Hadassa and Phil Bak Burry Fredrik Foundation The Cassella Family Mr. and Mrs. Gordon Geballe Mr. & Mrs. Ted Kennedy Earl Tucker	Madelyn Cerritelli Todd Harthan Joyce Mailhouse Rick Mayer Cynthia Parker Todd Renz William Stiefel Chris Ulbrich
ARTS PATRON (\$1,000-\$2,499)			
Kenneth Allen and Lynn Manizza Juliette Andrews Allied Printing Services Bill Chapin and Andrea Bloom Todd Depasquale Andrew Eder George Eliades Mr. and Mrs. Ted Ellis Judith Fisher Betty Foster Julia Francis	Rich Hassan Matthew Holbrook Bill Horne and Roberta Brilmayer Jeffrey Hoffman Patricia Jacobson Jeffrey Allen Johnson Mr. & Mrs. George Lacapra Jr Linda Landis Mosaic Marketing Christopher McLeod Tom and Nancy Patton	Marcia Rock Mr. and Mrs. Patrick Ruwe Town Fair Tire Foundation Bruce and Mariah Seymour Curtis and Ann Sorensen Hal Spitzer Kate Walbert Don and Anne Weinbach Wendy Wheeler and Shawn Reilly David Wildstein	

BENEFACTORS (\$100-\$999)

Navaraj Ahuja Anonymous Elizabeth Appel Robert Babcock Sharon Barnabei Susan Barnes David Beckerman Alfred Bertoline Christine & Ken Bjork Kathleen Bloss Frazier Bronson and Helen Wong Dean Brown Lauren Brown Victor Burga John Bysiewicz Mary Cahalane Allison Camarco Marc Camille Sharon Collins Don Conklin Lisa Courtney Joanne Cristiano Susan Crockford-Peters Linda Cronan James Demonaco Matthew Detmer	Stacy Donohoe Edward Dubendorf Eversource Daniel F Gilmore Gwendolyn Fetherston Julie Fitzpatrick Mary Ann Frank Gordon and Shelley Geballe Katina Gionteris Josephine Giordano Linda Giordano Matt and Jennifer Glass Elaine Gluck Fred Gorelick and Cheryl MacLachlan Peter Hawes Caroline Henningsen Pamela Hetherington Matt Hoey Alan Horwitz Laura Jacobs Eliot Jameson Shana Kemp Joan Krochmal John Lamirande Lauren Lepene	Mr. & Mrs. Nathan Lerner Christopher Libenson Elizabeth Lofquist Jim Love Diane McGuire James McKay Patricia Mezzi Naomi Mitchell Susan Mulcahey Kathleen Murphy Joseph Nardini Dantram Nguyen Curtis O'Connor Charlotte Parker Nicole Paxson Richard Pignataro Nicholas & Lauree Pekar Carla Pero Ryan Pliner Traci Provost David Rock Cathynn Roding John Ruckes Thomas Sansone Stephanie Schechter Sea Mist Cruise Dr. & Mrs. Ronald Savin	Joe Siart III Jayme Sifling Tina Sildker Harold Spitzer Neil Srivastava Joan A. Steitz Donna Stern Jay Stiefel Shepard and Marlene Stone Stephanie Szostak Geraldyn Tagatac Nora Taylor Jacqueline Torcellini Earl Tucker Jr Jay Webb Mary Lee Weber Jeffrey Weber Wiener and Dattner Philanthropic Fund/The Jewish Foundation of Sarasota-Manatee Jenya Weinreb Laurence Weller Wyeth Architects, LLC John and Pat Zandy Jeffrey Zeitlin
---	---	---	---



stony creek market

breakfast & lunch
open daily year round

stony creek pizza

evenings *seasonal hours*

178 thimble island rd • stony creek • branford

203-488-0145

www.stonycreekmarket.com



**WYETH
ARCHITECTS**

WyethArchitects.com
Architects ^{of the} Legacy Theatre

Guitars
Mandolins

Acoustic
Music
.Org[®]

1250 Boston Post Road
Guilford, CT
(203) 458-8353

Legacy Theatre Donors

GRANTS

CT Dept of Economic & Community
Development Office of the Arts
Guilford Community Foundation

CT Dept of Economic & Community
Development Office of the Arts
Eversource

Community Foundation of Greater
New Haven

2023 SEASON SPONSORS

As of November 3, 2023

Legacy Theatre gratefully acknowledges support from our Corporate and Foundation Supporters

MAINSTAGE SEASON



BRANFORD
Community Foundation

BRANFORD COMMUNITY FOUNDATION &
GUILFORD SAVINGS BANK



THE GUILFORD FOUNDATION &
GUILFORD SAVINGS BANK

MASTERS OF PUPPETS
THE BURRY FREDRIK
FOUNDATION

wshu | Public Radio

BEAUTY AND THE BEAST

THE MARTYN
FOUNDATION

THE PLAY THAT GOES WRONG



JANA AND TOM
SHEA



WMNR
Fine Arts Radio

wshu | Public Radio

SUNDAY BROADWAY CONCERT SERIES

MACK IS BACK! THE MUSIC OF BOBBY DARIN AND MORE!



ANASTASIO
TRUCKING



Industrial Acceptance Corporation
AUTO FINANCE SPECIALISTS



Webster
Private Bank®

FAMILY SERIES



COMMUNITY SPONSORS



AT&T

Calcagni
REAL ESTATE



Support has been provided to Legacy Theatre

from the Connecticut Arts Endowment Fund and CT Humanities (CTH).

*with funding provided by the Connecticut State Department of Economic and Community
Development/Connecticut Office of the Arts (COA) from the Connecticut State Legislature.*

Become a 2024 Sponsor!

Please consider including Legacy Theatre in your 2024 marketing efforts.

We have sponsorship opportunities for every budget!

Scan to learn more!



Anderson Krause

INSURANCE

**We Keep Our Family Tradition
So You Can Keep Yours**

**Personal & Business
Insurance**



Morgan M. Krause CISR, CIC
morgan@andersonkrause.com



Michael A. Krause CIC
mkrause@andersonkrause.com

203.488.6386 | AndersonKrause.com
238 East Main Street, Branford, CT

A round of applause, please!

A Legacy Theatre Standing Ovation
to our wonderful behind-the-scenes Guild Members,
Susan Barnes, Lisa Courtney, Tina Ells, Katina Gionteris, and Kristie Shanahan.

JOIN THE GUILD!



Legacy Theatre company members join Tony Award-winning actress/singer Nikki M. James onstage after her concert, 2/26/23. Photo by Samuel Bibbins.

- The Legacy Theatre Guild is comprised of dedicated members of the Shoreline East community who come together as a group to support the work and mission of the Legacy Theatre in Stony Creek, CT.
- These “cheerleaders for the performing arts and the creative process” freely give their time and talents to help the full and part-time staff at the Legacy with self-contained service projects; beautifying or updating a neglected or dated area within our actor housing, assembling printed materials for a bulk mailing campaign, helping to prepare or serve cast and company dinners or summer cookouts, etc.
- Active members quickly become part of the Legacy family, gathering when called upon to help in the true spirit of giving. A veritable and enthusiastic “theatre club of volunteers,” Legacy Guild members can soon become the backbone of the not-for-profit arts organization.

For more information
Contact Managing Director, Jeff Provost
JProvost@LegacyTheatreCT.org

Thank You to the Legacy Acting Company 2021-2023

Legacy Theatre is grateful to the many artists and theatremakers who have found a home on our stage these past few years.

Tess Adams
Nia Alsop
James Andreassi
Laresse Arvey
Dana Ashbrook
Tiheba Baine
Jennifer Barnhart
Keely Basiden Knudsen
Thomas Beebe
Brianna Beiller
David Bell
Alyssa Bianca
Kiersten Bjork
Nate Bloom
Erik Bloomquist
Michael Bobenhausen
Katie Boren
Jessica Breda
Anthony Brown
DJ Bucciarelli
Al Bundonis
Colleen Callahan
Philip Callen
Cory Candelet
Dana Canevari
Emmett Cassidy
Betzabeth Castro
Carly Censi
Niko Charney

Derek CJ Gulley
Patrick Clifford
Chelsea Dacey
Lisa DeAngelis
Randall Delone Adkison
Jhulenty Delossantos
Amanda Detmer
F. Liam Devlin
Chaz Esposito
Nick Feltherston
Julie Fitzpatrick
Kevin Flynn
Carlin Fournier
Mary Ann Frank
Dan Frye
Kurt Fuller
Karl Gasteyer
Jason Germaine
Skye Gillespie
Sam Given
Emma Green
Joshua Greenvall
Natalie Hamilton
Joshua Heggie
Barbara Hentschel
Olivia Hoffman
Michael Hogan
Casey Howes
Frank Ingrasciotta

Kayla Rose Jarry
Jimmy Johansmeyer
Russ Kassoff
David Katz
Mitchel Kawash
Emery Knudsen
Liviana Knudsen
Reeves Knudsen
Saviah Knudsen
Wynter Knudsen
Isaac Kueber
Susan Kulp
Chloe Lang
Tyrell LaTouche
Chris Lemieux
Michael Linden
Perry Liu
Moir Malone
Mary Mannix
Melanie Martyn
Clayton Matthews
Daryl McGraw
Gabe McKinley
Todd McNeel
Jillian Milette
Evan Jay Newman
Delaney Nicole
Hayley Organ
Bella Pacheco Rarick

Erica Pajonas
Fitz Pant
Robert Peterpaul
Danielle Poysler
Sophie Rapiejko
James Roday Rodriguez
Josiah Rowe
Nino Ruggeri
Anne Runolfsson
Sonny Ryans
Mariah Sage
Michael Sayers
Tom Schwans
Brad Shur
Bryce Smith
Noah Sonenstein
Kimberly Squires
Michael Steinman
Stephanie Stiefel Williams
Scott A. Towers
Katrien Van Riel
Frank Vlastnik
Christine Voytko
Jacob Michael Warren
Indiana Weaver
Sydney Weiser
Kelvin Young
Allan Zeller



Disney's *Beauty and the Beast*
Photo: Sam Bibbins



A Christmas Carol (2022)
Photo: T. Charles Erickson

Valpak is proud to support
The Legacy Theater



What can Valpak do for your business?

Contact us and let's get started building your campaign today!

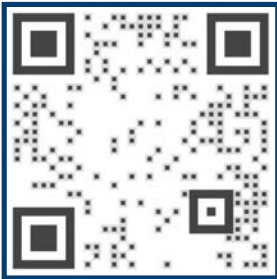
Mark Barillaro

mark_barillaro@valpak.com

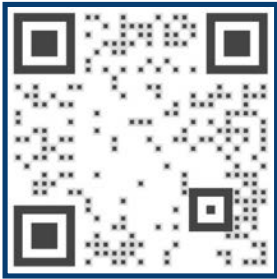
860.552.8109

Save more at Valpak.com!

SCAN FOR VALPAK APP



SCAN FOR MORE INFO



Give the Gift of Live Theatre this Holiday Season!



TICKETS &
GIFT CERTIFICATES
MAKE GREAT GIFTS!



SUGGESTED AMOUNTS:

\$70 (2 Tickets to the first Thursday Preview Performance of a Mainstage Production)

\$100 (2 Tickets to a Mainstage or Sunday Broadway Concert Series Performance)

Please Note: Ticket fees may apply.



LegacyTheatreCT.org or Call (203) 315-1901 Today!

LEGACY THEATRE 128 Thimble Islands Road in Branford, CT