

THE LEGACY THEATRE 2023 SEASON



Yale SCHOOL OF MUSIC

Robert Blocker, *Dean*

Gerald Martin Moore, *Yale Opera Artistic Director*

with



Keely Baisden Knudsen, *Artistic Director*



BENJAMIN BRITTEN'S

THE RAPE OF LUCRETIA

Hamilton, Gavin. *The Death of Lucretia*. 1763 to 1767, Oil on canvas. Yale Center for British Art, Paul Mellon Collection, B1981.25.318.

.....

WE SUPPORT THE ARTS

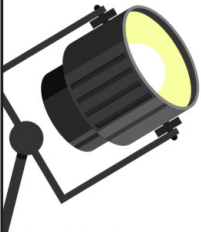
AT THE LEGACY THEATRE

.....



iHeartMEDIA

CONNECTICUT



Letter from the Artistic Director



Dear Friends,

And just like that, we are beginning Season Three here at the beautifully restored Legacy Theatre! It has been such a tremendous journey thus far, from a mere vision with community support, to a thriving theatrical asset with seasons of varied entertainment, classes, and outreach. The gratitude I feel for every person who has touched this organization in any way – be it through gifts, volunteer hours, ticket purchases, creative insight, collaboration, you name it! – is deep and lasting. Thank you from the bottom of my heart for your support of Legacy Theatre.

This season, the MainStage season gets off to an explosive start with a celebrity-lined cast in a world premiere of the dramatic adult-themed wrestling play *Masters of Puppets*. Followed by a musical spoof of epic proportions, *The Musical of Musicals (The Musical!)* is non-stop comedy, written especially for musical theatre lovers! Next, the grand, classic tale of Disney's *Beauty and the Beast* will sweep the stage this summer with the satisfying dramatic story of Belle's true love, which heals a community of lovable characters put under a wicked spell. With iconic music to tell this "tale as old as time," this lush and re-envisioned production will be a memorable experience for the whole family. Finally, *The Play That Goes Wrong* is our outrageous comedic straight play this season, with physical comedy and word play that will keep your belly aching with laughter. Peppared with impressive Broadway soloists in the Sunday Broadway Concert Series, special events, classes, and outreach, Season 2023 will be one we will never forget ~ and I am so glad that you are here along with us for the ride!

With much excitement for all the future holds,

Keely Baisden Knudsen

Artistic Director & Co-Founder

Legacy Theatre

Welcome to Legacy!

Follow Legacy on social media!



facebook.com/LegacyTheatreCT



@legacytheatrect



@legacytheatrect

Legacy Wi-Fi

Network: LTC GUEST

Password: GestWiFi!

Gift Certificates and Merchandise is Available at the Box Office!

At This Theatre



c. 1890s



c. 1930s



c. 1930-1940s

- 1866 A small, non-denominational church was built at 128 Thimble Islands Road in the village of Stony Creek in Branford.
- 1900 A fire damaged the property.
- 1914 The land is sold to William Howd and the foundations were laid for a silent movie theater called Idle Hour Moving Pictures.
- 1923 A theater group belonging to the Stony Creek Church of Christ called the Parish Players was forming.
- 1928 The Parish Players purchased the movie theater space, and repurposed it to “live” theater for the first time. Productions included the world premiere of *Death Takes a Holiday* as well as *Private Lives*, *Merrily We Roll Along* and *Pygmalion*.
- 1938 Orson Welles wrote and directed a silent film to accompany his direction of William Gillette’s 1894 comedy *Too Much Johnson* at what was now the Stony Creek Theatre.
- 1946 The theater building became home to Panix/Materna-Line, Inc., a designer and manufacturer of corsets and the like.



Stony Creek Theatre production of *Too Much Johnson* (1938)

At This Theatre



1946



c. 1980s - 2010s

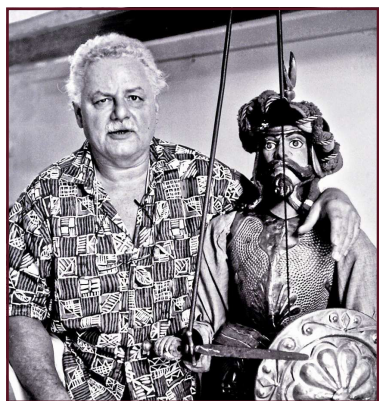


2021

1961 Grace Weil established the space as the Stony Creek Puppet Museum with life-sized Sicilian puppets direct from performances in Italy. Grace Weil's son, Jim, and Italian Salvatore Macri, were the next to put their mark on the theater. With their rare and cherished skills of puppetry, the Italian puppets came to life.

1970s-
2010s Classes and theater were in abundance under Jim Weil, Barry Fritz, the Alliance Theatre, Joe Davis and others. Passing on the legacy of theatre to others is a stronghold of the Legacy Theatre, which purchased this theater in 2013--and now you are part of its ongoing Legacy.

2021 Legacy Theatre, a repertory company with a conservatory arm, opened the restored theatre for performance and training. From nothing but a dream and a vision to now teams of committees, boards of directors and advisors, actors and teachers, this shoreline gem has been restored and revitalized. We at Legacy invite you to continue with us as we commemorate the past and spotlight the future of this special stage.



Jim Weil
(1960s-1970s)

Explore more about
AT THIS THEATRE
on the Legacy website!

Photos, video and more!

Scan This
QR Code:



Or visit
LegacyTheatreCT.org/history

It's never too late to learn!



FREE ACADEMIC CLASSES

High School Diploma / GED®

English for Speakers of Other Languages

U.S. Citizenship Preparation

AFFORDABLE ENRICHMENT CLASSES

Computers | Arts & Crafts | Cooking | Retirement Planning

| Health & Wellness | Music & Dance | Mind & Spirit |

World Languages | Classes for Kids & Families

Shoreline

ADULT EDUCATION

(203) 488-5693



SCAN ME!

SHORELINEADULTED.ORG

Yale SCHOOL OF MUSIC

Robert Blocker, *Dean*

Gerald Martin Moore, *Yale Opera Artistic Director*

with



Keely Baisden Knudsen, *Artistic Director*

present

BENJAMIN BRITTEN'S THE RAPE OF LUCRETIA

Music by BENJAMIN BRITTEN

Libretto by RONALD DUNCAN

Presented by arrangement with Boosey & Hawkes, Inc., publisher and copyright owner.

with

ELANA BELL ETHAN BURCK AMALIA CREVANI DANIEL ESPINAL
ALLISON FAHEY SAMUEL KIDD ANNELIESE KLENETSKY
SERGIO MARTINEZ ANA MORA KARA MORGAN
FINN SAGAL ALEX SMITH JILLIAN TATE KORIN THOMAS-SMITH

Instrumentalists

ALEJANDRO ROCA YUN CHAI LEE MAKANA MEDIEROS

Stage Director CANDACE EVANS

Music Director ALEJANDRO ROCA

Scenic Designer KIMKIM

Costume Designer REBECCA WELLES

Projection Designer CAMILLA TASSI

Lighting Designer JAMIE BURNETT

Properties Designer KAREN ROOT

Stage Manager T. RICK JONES

Master Carpenter RICH BURKAM

Assistant Stage Manager ERICA PAJONAS

Projection Assistant JOHN HORZEN

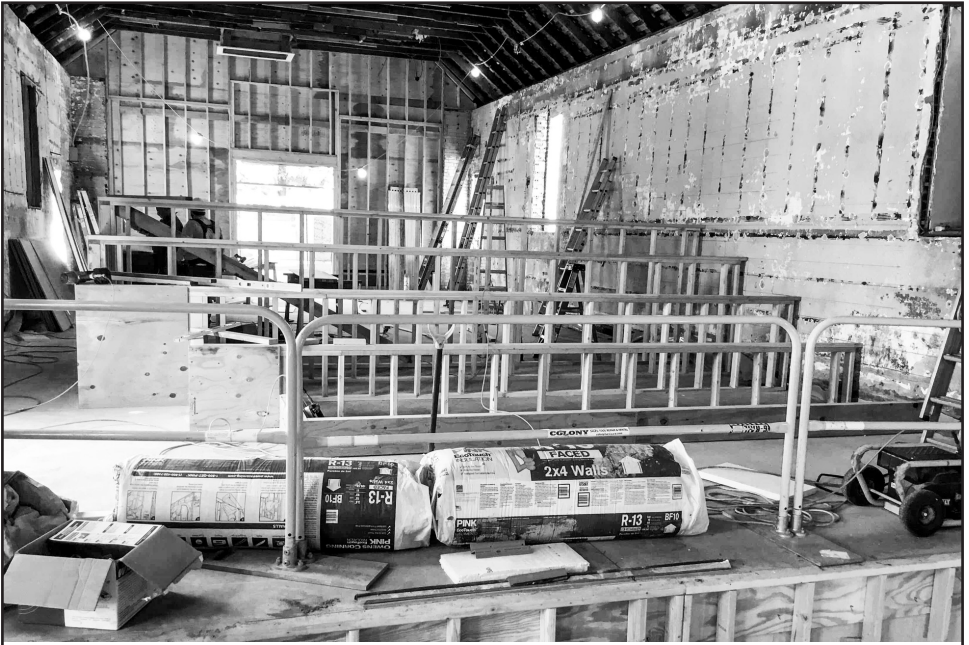
Wardrobe Crew ANNA BLANKENBERGER

Run Crew LANE SHOEMAKER & COLLEEN CALLAHAN

February 17 & 18, 2023, The Legacy Theatre, Branford, CT

There will be one 15-minute intermission

Approximate running time is 2 hours and 10 minutes



WE ARE PROUD TO SUPPORT THE LEGACY THEATRE 2023 SEASON

2 Summit Place, Branford, CT 06405 • 203.643.1000 • www.oralconstruction.com



Cast

Cast in order of vocal appearance

Male Chorus	ETHAN BURCK (F) DANIEL ESPINAL (S)
Female Chorus	ELANA BELL (S) ANNELIESE KLENETSKY (F)
Collatinus	SERGIO MARTÍNEZ
Junius	FINN SAGAL (S) ALEX SMITH (F)
Prince Tarquinius	SAMUEL KIDD (S) KORIN THOMAS-SMITH (F)
Lucretia	ALLISON FAHEY (F) KARA MORGAN (S)
Bianca	ANA MORA
Lucia	AMALIA CREVANI (F) JILLIAN TATE (S)

F = Performing Friday, February 17
S = Performing Saturday, February 18

Instrumentalists

Piano: ALEJANDRO ROCA
Harp: YUN CHAI LEE
Percussion: MAKANA MEDIEROS

Synopsis

ACT ONE

Two Students enter a library for a study session. They read and consider how the ancient Etruscans seized Rome and took power. As they continue to study, history begins to surround them.

It is ancient Rome in an army camp outside the city. Generals Collatinus, Junius and Tarquinius drink, and discuss how some men placed bets on their wives' faithfulness. However, after riding back to Rome to investigate, all the wives were found to be unfaithful – except for Lucretia, the wife of Collatinus. The cuckolded Junius, jealous of Lucretia's fidelity, insists that "women are all whores by nature." The drunken Tarquinius, a single man, and frequenter of brothels, declares that Lucretia is an exception. "I'll prove her chaste," he says, and with Junius' subtle urging, Tarquinius leaves for Rome, riding his horse to exhaustion, in his haste.

That evening, at Lucretia's house in Rome, her servants Bianca and Lucia are spinning, and speaking about love. They are surprised by a violent knock on the door. Tarquinius enters and asks Lucretia for wine and lodging. She shows him to a room for the night.

ACT TWO

The two Students continue to read, reflecting on how the Romans felt about Etruscan domination and attitude.

Then, they observe as Tarquinius steals into Lucretia's room. He kisses her, and she, dreaming of Collatinus, draws him closer. But when Lucretia wakes and realizes it is Tarquinius, she refuses him. After a struggle of words, power, and intention, Tarquinius overcomes Lucretia.

Shocked by their increasing realizations of history, the Students consider their devout Christian viewpoints. Then, they continue reading...

The next morning, Lucia and Bianca enjoy the garden as they arrange flowers. Lucretia enters and demands Lucia send a message for Collatinus to come home. Bianca tries to stop the messenger, but she is too late: Collatinus arrives with Junius. Lucretia confesses to Collatinus all that has happened. He insists it will not change their marriage, but Lucretia feels differently.

Shocked and disheartened, the Students wonder if there is any meaning to these tragic events. Can things be made right through faith? Is humanity predetermined to simply repeat history?

The question remains: "Is it all?"



We know you're safeguarding **more than just your assets.**

We can help you preserve and protect your wealth,
at your pace.


Time to look out for more than your future? Our advisory practice is about the relationship we forge with you: conserving your assets, understanding the vision for your loved ones and seeing the big picture to fulfill your goals.

John H. Driscoll, Jr.
860.519.8183
jdriscoll@websterbank.com



WebsterBank®

[websterbank.com](https://www.websterbank.com)

Investment, trust, credit and banking services are offered by Webster Private Bank, a division of Webster Bank, N.A. Investment products offered by Webster Private Bank are not FDIC or government insured; are not guaranteed by Webster Bank; may involve investment risks, including loss of principal amount invested; and are not deposits or other obligations of Webster Bank. Webster Private Bank is not in the business of providing tax or legal advice. Consult with your independent attorney, tax consultant or other professional advisor for final recommendations and before changing or implementing any financial, tax or estate planning advice. All credit products are subject to the normal credit approval process. Webster Bank, the Webster Bank logo and the W symbol are trademarks of Webster Financial Corporation and Registered in the U.S. Patent and Trademark Office. Webster Bank, N.A. Member FDIC. Equal Housing Lender  © 2022 Webster Financial Corporation. All Rights Reserved.

Who's Who

CANDACE EVANS (*Stage Director & Choreographer*) Internationally praised for "a flawless sense of timing" (Opera News), whose work is "genuine gripping drama" (Opera Now), Ms. Evans is known for incisive storytelling. Her *Akhnaten* was named 'definitive' by the Philip Glass organization, and her production of *Florencia en el Amazonas* for San Diego Opera was acclaimed as "best illustrating composer intent." *La Viuda Alegre*, at the legendary Teatro Colón, was named in the top three operas of the entire Argentinian season. Her own performance career included dancing with the Wisconsin Ballet Company, singing with the Dallas Symphony Orchestra, international tours in Shakespearean roles and national voice-over credits. This combination of talent and interest illustrate why her directorial style includes the integration of musical intent, dramatic text and the physical life of performers. Passionate about the future of opera education, Ms. Evans is happy to return to Yale University, and has also directed frequently at Indiana University, Carnegie Mellon and at various YAP programs nationally. Among past engagements: Dallas Opera, Santa Fe, Arizona, Palm Beach, San Diego, as well as international tours with the Montefeltro Festival.

GERALD MARTIN MOORE (*Director of Yale Opera*) is an internationally renowned singing teacher and a vocal consultant. He has worked in such houses as Covent Garden, La Scala, the Metropolitan Opera, San Francisco and Opera de Bastille in Paris as well as the Aix-en-Provence, Edinburgh and Glyndebourne Festivals. Since moving to NYC in 2008 he has been on the teaching faculty of the Metropolitan Opera's Lindemann program and Curtis Institute of Music. He regularly gives masterclasses at Glyndebourne, Merola, Washington National Opera, and is on the regular teaching faculty at Music Academy of the West, Lyric Opera of Chicago's Ryan Opera Center and Ravinia Steanes. Mr. Moore joined the faculty of the Yale School of Music as Director of Yale Opera in 2020. A frequent recitalist, most notably with Renée Fleming, he has performed before such dignitaries as President Obama, President Clinton and Secretary of State Hillary Clinton, HRH King Charles III, Justice Ruth Bader Ginsburg and UN Secretary General Kofi Annan. Gerald was recently featured accompanying Renee Fleming in the soundtrack for the movie *Bel Canto* and also coached Julianne Moore who plays the role of Roxanne. Mr. Moore may currently be heard as a regular host of the Metropolitan Opera Quiz, and is a frequent judge for prestigious vocal competitions, including the Metropolitan Opera National Council auditions.

ALEJANDRO ROCA (*Music Director & Pianist*) Opera coach and conductor Alejandro Roca's recent engagements include performances of Mozart's *The Marriage of Figaro* at Liceu Conservatory in Barcelona, new productions with the Bogota Philharmonic Orchestra of Rossini's *The Barber of Seville* and Puccini's *Gianni Schicchi*, performances with the

Medellin Philharmonic Orchestra of Falla's *Master Peter's Puppet Show*, and debuts with the Philippine Philharmonic Orchestra and the Orchestra of the Cláudio Santoro National Theater in Brasilia, Brazil. Roca has collaborated with such renowned conductors as Rinaldo Alessandrini, Gustavo Dudamel, Andrés Orozco-Estrada, Josep Caballé Domenech, Patrick Fournillier, Hilary Griffiths, Gérard Korsten, and Miguel Roa. Roca has appeared in recital with numerous vocalists around the world and has recorded music by several Latin American composers. Since 2006, Roca has served as a conductor and pianist at the Opera of Colombia, in Bogotá, and his repertoire includes more than 70 fully prepared operas and zarzuelas. Roca serves as Lecturer in Music/Opera Coach at the Yale School of Music. He previously served as Opera Coach and Director of the Opera Workshop at Central University, in Bogotá, and at Scuola Italia's summer program for young opera singers in Sant'Angelo in Vado, Italy. He has also been a member of the faculty at the University of Antioquia, in Medellín, and at Pontifical Xavierian University in Bogotá, and has served as Director of the Cartagena International Music Festival's academic program. Roca's pedagogical experience includes the presentation of master classes at Indiana University and the University of Michigan in the United States, Nayang Academy of Fine Arts in Singapore, Capela di Santa Maria in Curitiba, Brazil, and the University of Valle and the University of the North in Colombia, among other institutions. Roca earned his master of arts degree in orchestral conducting from the National University of Colombia and his bachelor of arts degree in piano performance from the Antonio Maria Valencia Conservatory in Cali. He also pursued postgraduate studies at Liceu Conservatory in Barcelona.

KIMKIM (Juhee Kim) (*Scenic Designer*) is a fourth-year M.F.A candidate in set design at David Geffen School of Drama at Yale. She received her B.F.A. in painting from Hongik University* in South Korea, where she also worked as a set designer for TV shows and events at CJ ENM*. Recent credits include *Romeo and Juliet*, directed by Leyla Levi (DGSD); #4 written and directed by Abigail C. Onwunali (Yale Cabaret); 'Art' directed by Carson White (Yale Production); Brand promotion film for Torre in collaboration with PASOO*. Her interest in body and space led her to also explore choreography, as seen in her work on *Over Easy* (Yale Cabaret) and her upcoming choreography for *The Winter's Tale* directed by Sammy Zeisel (DGSD). kimkimscenic.com

REBECCA WELLES (*Costume Designer*) DGSD '12 has been designing for Yale Opera since 2013 where her credits include, *L'elisie d'amore*, *Florencia en el Amazonas*, *Eugene Onegin*, *The Magic Flute*, *Hansel and Gretel*, Fall 2017- 2020 *Opera Scenes*, *Le pauvre matelot*, *The Bear*, *Don Quichotte*, *La Cenerentola*, *Le nozze di Figaro*, *Gianni Schicchi*, *Riders to the Sea*, *Bon Appiit* and *Iolanta*. Rebecca is also an adjunct

Who's Who

professor of performing arts at Eastern Connecticut State University, and the costume shop manager at The Mystic Seaport Museum. Other design credits include *The Tempest*, and *Comedy of Errors* Elm Shakespeare Company, *Million Dollar Quartet* and *Tenderly: The Rosemary Clooney Story* at Ivoryton Playhouse, *Cenerentola*, *Gianni Schicci*, *The Trial*, *Magic Flute*, and *La Boheme*, for Salt Marsh Opera; *Il barbiere di Siviglia*, Aspen Opera Center; *Cavalleria Rusticana*, *I Pagliacci*, Boheme Opera New Jersey.

CAMILLA TASSI (*Projection Designer*) is a projection/video designer, producer, and musician from Florence, Italy. Design credits include *Falling Out of Time* (Carnegie Hall), *L'Orfeo* (Apollo's Fire), *Stinney: An American Execution* (PROTOTYPE, NYC), *Cendrillon* (Peabody Opera), *Fires in the Mirror* (Baltimore Center Stage & Long Wharf Theater), *Magic Flute* (Berlin Opera Academy), *Alcina* (Yale Opera), and *Side by Side* (Rep Theater of St. Louis). For video, she has directed and edited for the Washington Chorus, Les Délices Early Music, Princeton Festival, and Chicago Ear Taxi Festival. She has sung with groups including the Yale Schola Cantorum and Apollo's Singers. Tassi holds degrees in computer science, music, and projection design. 2022 recipient of the Burry Fredrik design award and 2023 Robert L. Tobin Director-Designer opera prize. MFA in Design at the David Geffen School of Drama at Yale, under Wendall Harrington. <http://camillatassi.com>

JAMIE BURNETT (*Lighting Designer*) is a graduate of Carnegie Mellon University, recipient of the 2005 New Haven Arts award, and Founding member of The Elm Shakespeare Company. Lighting Designer at Elm Shakespeare for 26 years and Set Designer until 2009. Lighting Design credits include International Festival of Arts and Ideas 2018, *Requiem for an Electric Chair*; Iseman Theater 2017, *Never Stand Still*. CCT: *Skeleton Crew*, *Rasheeda Speaking*, *Jesus Hopped the A Train*, *Sunset Baby*, *Topdog/Underdog*. SCSU: *Stop Kiss*, *Much Ado About Nothing*, *The Boyfriend*, and *Our Country's Good*. SHU: *In The Heights*, *Jesus Christ Superstar*. Citywide Open Studios: New Haven Armory; Projects2k: Stamford Train Station Façade Lighting; Producer/Lighting Designer/Production Manager for *Terra Tractus* (*The Earth Moves*), (2005) *Terra Mirabila*, (2001) *Terra Lumina* and *Terra Continuum* (1999); performed in the Stony Creek Granite Quarry; PNM's *Branford Luminata* (2010) lighting Branford Green Town Hall. His company, Luminous Environments, specializes in theater and TV studio renovations and public art installations involving specialized lighting. Recent projects: Branford HS Theater, Fairfield Community Theater, and Legacy Theatre.

KAREN ROOT (*Properties Designer*) is delighted to return to Yale Opera. Previously at Yale Opera she designed *L'elisir d'amore*. Theatre set design credits include: *Gallathea* (Southern Connecticut State University,

upcoming), *The Tempest* (Elm Shakespeare), *Taste of Fear* (Elm Shakespeare), *All About Image/We Are the Elite* (NY International Fringe Festival), *Great Catherine* (Helen Gardiner Phalen Playhouse), *Like Mamma Made You* (Factory Theatre). Other theatre credits include: *The Comedy of Errors*, and Elm Shakespeare Youth Festival (Elm Shakespeare), *La Ronde* (Soulpepper Theatre Company), *The Seagull* (Stratford Festival), *Pericles*, *Prince of Tyre* (Helen Gardiner Phalen Playhouse). Karen is also Guest Designer and Adjunct Professor at Southern Connecticut State University and an Emmy nominated and Parent's Choice Award winning production designer. Karen holds an Honors BA from University of Toronto. She is based in Westport, CT, where she lives with her husband, three children, and many pets. karenrootdesign.com

RICH BURKAM (*Master Carpenter*) came to Connecticut to study music and music recording at UNH. He played in bands such as 4:20, Space Cushion, and Over The Line. His studies continued, learning to be a luthier under Barry Lipman and Chris Tatalias, giving him a taste for fine woodworking. Richard now owns a woodshop that makes fine furniture, in a space which is shared with lighting designer Jamie Burnett. Together they have built sets for many production companies, including Elm Shakespeare, Yale Baroque Opera Project, and many small black box theater productions.

T. RICK JONES (*Stage Manager*) is delighted to be returning to Legacy, this time with Yale Opera. He was last here Stage Managing *A Christmas Carol* in 2022. His career spans 30 years, with other credits including Regional: White Heron Theatre Company (Resident SM/Production Manager); Lyric Stage Company of Boston (PSM); White Plains Performing Arts Center (PSM); Colonial Theatre – Shakespeare in the Park (PSM, Production Manager, Assistant Producer, Production Photographer); The Ivoryton Playhouse (PSM); Seven Angels Theatre; (PSM). Off-Broadway: *Sessions: The Musical* (PSM); *A Night at the Carlyle* (PSM); *Yohen* (PSM). T. Rick is also the Managing Editor of the online outlet *Daily Star Trek News* and a Contributing Writer for *Sherlock Holmes Magazine*.

ERICA PAJONAS (*Assistant Stage Manager*) Legacy Theatre: *A Christmas Carol* (Female Swing), *The Great Gatsby: A Live Radio Play* (Props Coordinator), *Deathtrap* (Props Coordinator & Assistant Stage Manager), *A Midsummer Night's Dream* (Hippolyta & Mustardseed). Quinnipiac University: *Thebes: A New Musical* (Laius), *Proof* (Catherine), *Macbeth* (Lennox & Doctor, Props Master), *Thom Pain* (based on nothing) (Producer), *The Lifespan of a Fact* (Props Master), *Love & Information* (Ensemble), *Bad Jews* (Set Designer), *Seven Minutes in Heaven* (Run Crew), *A Midsummer Night's Dream* (Fairy) *New Play Festival 2019* (Stage Manager, *Last Words*). Education:

Who's Who

Quinnipiac University, Psychology and Theater double major. Awards: Alpha Psi Omega Theater Honors Society, Psi Chi Psychology Honors Society.

JOHN HORZEN (*Projection Assistant*) is a third-year M.F.A candidate in projection design at the David Geffen School of Drama at Yale. He received his bachelor's degree in Violin Performance from the Blair School of Music at Vanderbilt University, and is constantly examining the connective tissue that binds his rhyming loves of producing, designing, and communal music-making in order to find new ways of storytelling. John's selected projection credits include *The Planets* (Woolsey Hall, Co-Projection Designer), *Cuatro Bailes* (The Bushnell, Co-Developer and Set/Projections designer), and *The Kite Runner* (The Hayes Theater, 3D Animator). johnhorzen.com | @johnhorzen

LANE SHOEMAKER (*Run Crew*) is a shoreline local from Madison who is very excited to be working on their second production at Legacy Theatre! They graduated this past May with their BA in Theatre Tech and Design from WCSU where they had the chance to work on many productions in many different positions with their main focuses being props and scenic painting.

COLLEEN CALLAHAN (*Run Crew*) is thrilled to be returning to the Legacy Theatre Team! She is a recent graduate of Western Connecticut State University with a degree in Theatre Arts. Her previous work includes Legacy Theatre's *A Christmas Carol* (Assistant Stage Manager & Wardrobe Assistant) WCSU's *Honey, I Shrank the Plays* (Stage Manager), and WCSU's *Hand To God* (Assistant Costume Designer). Selected performance experience includes WCSU's *Noises Off* (Dotty Otley), WCSU's *The Resistible Rise Of Arturo Ui* (Betty Dullfeet), WCSU's *In the Open* (Devon).

Singer Profiles

ELANA BELL (*Female Chorus*) Hometown: Baltimore, MD; Education: M.M. University of Cincinnati College-Conservatory of Music; B.M. & B.A. Oberlin Conservatory & College; Young Artist Programs: Des Moines Metro Opera; Music Academy of the West, Tanglewood Music Center.

ETHAN BURCK (*Male Chorus*) Hometown: Aurora, IL; Education: M.M. Curtis Institute of Music; B.M. Baldwin Wallace Conservatory; Young Artist Program: Santa Fe Opera.

AMALIA CREVANI (*Lucia*) Hometown: Milford, NJ; Education: B.M. DePauw University; Young Artist Program: Aspen Opera.

DANIEL ESPINAL (*Male Chorus*) Hometown: Sarasota, FL; Education: B.M. Manhattan School of Music; Young Artist Program: Merola Opera.

ALLISON FAHEY (*Lucretia*) Hometown: Sebastian, FL; Education: B.M. Stetson University; Young Artist Programs: Seagle Festival, Chautauqua Opera Conservatory.

SAMUEL KIDD (*Tarquinius*) Hometown: Ann Arbor, MI; Education: M.M. M.M. University of Cincinnati College-Conservatory of Music; B.M. The University of Michigan; Young Artist Programs: Wolf Trap Opera; Young Artist Vocal Academy Houston Grand Opera; Music Academy of the West.

ANNELESE KLENETSKY (*Female Chorus*) Hometown: Edison, NJ; Education: M.M. & B.M. The Juilliard School; Young Artist Programs: Music Academy of the West; Chautauqua Voice Program; Ravinia's Steans Music Institute.

SERGIO MARTÍNEZ (*Collatinus*) Hometown: Bogotá, Colombia; Education: M.M. University of Illinois Urbana-Champaign; B.M. Juan N Corpas University, Bogotá, Colombia; Young Artist Program: Glimmerglass Opera.

ANA MORA (*Bianca*) Hometown: Venezuela; Education: M.M. & G.D. New England Conservatory; B.M. Pontificia Universidad Javeriana; Young Artist Program: Santa Fe Opera.

KARA MORGAN (*Lucretia*) Hometown: Andover, MN; Education: M.M. New England Conservatory; B.M. Drake University; Young Artist Programs: Santa Fe Opera; Sarasota Opera.

FINN SAGAL (*Junius*) Hometown: La Canada, CA; Education: B.M. UCLA; Young Artist Program: Aspen Music Festival; Curtis Summerfest.

ALEX SMITH (*Junius*) Hometown: Kalamazoo, MI; Education: B.M. Oberlin Conservatory of Music; Young Artist Program: SongFest; Oberlin in Italy.

JILLIAN TATE (*Lucia*) Hometown: Fairfax, VA; Education: B.M. University of Maryland, College Park.

KORIN THOMAS-SMITH (*Tarquinius*) Hometown: Toronto, Canada; Education: M.M. & B.M. University of Toronto; Young Artist Programs: Music Academy of the West; Aspen Music Festival; Ravinia Steans Music Institute.

Your home is worth a lot to you.

When you are ready to make a move, don't sell yourself short.



Scan the QR code with your phone's camera to receive a complimentary Equity Analysis of your home.

Calcagni

REAL ESTATE

Selling homes & helping CT's home buyers for over 50 years.

 /CalcagniRealEstate

calcagni.com

 /CalcagniRealEstateCT

Who's Who

YALE OPERA PRODUCTION STAFF

Manager	ERIKA NIEMI
Music Preparation	ALEJANDRO ROCA, CURTIS SERAFIN, ANNA SMIGELSKAYA
Surtitle Operator	CURTIS SERAFIN
Voice Faculty	GERALD MARTIN MOORE, ADRIANA ZABALA

LEGACY THEATRE STAFF

Artistic Director & Co-Founder	KEELY BAISDEN KNUDSEN
Co-Founder	STEPHANIE STIEFEL WILLIAMS
Theatre Manager & Interim Co-Managing Director	KIERSTEN BJORK
Production Manager & Interim Co-Managing Director	SARAH PERO
Development Manager	ANNE RUNOLFSSON
Producer of Broadway Concert Series & Community Arts Coordinator	COLIN SHEEHAN
Marketing and Community Outreach	MARY LEE WEBER
Front of House Manager & COVID Safety Manager	JEFF ZEITLIN
Box Office Assistant	NICK FETHERSTON
Front of House Alternates	CHRIS LEMIEUX, KELSEY MULLIGAN, KENNY PELPHREY, NICK FETHERSTON
Graphic Designer	JOE LANDRY

LEGACY THEATRE BOARD OF TRUSTEES

Stephanie Williams, *President*

Jana Shea, *Vice President*

Kathleen Murphy, *Secretary*

Luke Williams, *Treasurer*

Damian Doria

Katina Gionteris

Charles Grady

Brian Knudsen

Tom Shea

Aleta Staton

James Roday Rodriguez, *Honorary Board Member*

SPECIAL THANKS

Wendall K. Harrington, Riccardo Hernandez, Chris Melillo, Ben Schwartz

Sarah Pero, The Burry Frederick Foundation

Legacy Volunteers, TYCO, The Stony Creek Community, The Bjork Family, Brian W. Knudsen, Nancy Smith, Don Weinbach, Joe Landry, Christensen Landscaping (Lawn Company), Auntie Bella (Cleaning)

Contact Legacy Theatre

Box Office: (203) 315-1901 (Mon-Fri 10am-3pm)

Email: Info@LegacyTheatreCT.org

Website: www.LegacyTheatreCT.org

Gift Certificates available online or through the Box Office.

 facebook.com/LegacyTheatreCT

 [@legacytheatret](https://www.instagram.com/legacytheatret)

 [@legacytheatret](https://twitter.com/legacytheatret)

Legacy Who's Who



KEELY BAIDEN KNUDSEN (*Artistic Director & Co-Founder*) An award winning director, Keely has performed, directed, and choreographed internationally in plays, musicals, operas, and dance companies in hundreds of theatrical productions and has performed in 48 of the United States and in the UK. Realizing her vision of a new theater company on the Connecticut Shoreline, Keely's ideals of inspiring, inclusive work that uplifts the human spirit and connects communities formalized in the creation of the Legacy Theatre with Co-Founder Stephanie Stiefel Williams, a performing colleague and dear friend. Keely has directed, choreographed, and taught a myriad of performing arts courses at such institutions as Quinnipiac University, Yale University, Fairfield University, Hartt School of Drama, Southern Connecticut State University, Westminster College, and was the Director of Education of New Haven's acclaimed Elm Shakespeare Company for several years. Additionally a composer/lyricist and playwright, she is currently collaborating on two musicals and is a member of ASCAP. Her directing has been heralded by the Arts Paper as "...visually striking, emotionally moving" and "captivating" and of her direction of *Hamlet* it was said, "Knudsen has made the notoriously difficult Shakespearean language accessible." Her creation of the Wheel Life Theatre Troupe has been an especially rewarding program as she acts and directs with those who ambulate with crutches and wheelchairs. Her BFA is from New York University's Tisch School of the Arts, at which she graduated first in the class, and she received her Masters Degree in Drama on full scholarship from The Royal Scottish Academy of Music and Drama in Glasgow. Keely, her husband Brian, and five children (Saviah, Liviana, Wynter, Emery, and Reeves) reside in Guilford, CT, where she thoroughly enjoys running the Legacy with a tremendous staff and community support.



STEPHANIE STIEFEL WILLIAMS (*Co-Founder & Chairperson of the Board*) is an active and versatile performer in musicals, concerts, and plays and has appeared in numerous locations throughout the Northeast. A member of Actor's Equity Association, she has appeared professionally in a variety of roles at venues such as Broadway's Marriott Marquis, Legacy Theatre, Hartford Stage Company, Foxwoods' Fox Theatre, Atlantic City's Tropicana, Turning Stone Casino, and the Garde Arts Center. Among these roles, her favorites include Aldonza in *Man of La Mancha*, Anita in *West Side Story*, Lola in *Damn Yankees*, Maria in *The Sound of Music*, and Guenevere in *Camelot*. Although her professional focus has been in

musical theatre, she also has been engaged frequently as a concert soloist, as well as an a cappella ensemble singer. Locally, Stephanie is a proud founder, repertory member, and trustee president at Legacy Theatre where she starred in the critically acclaimed 2022 production of *I Do! I Do!*. In 2021, she was a featured performer in Legacy's *Barefoot in the Park* and she also appeared as a featured vocalist in the wildly popular Mack is Back! *Mack is Back!*. In addition to her work with Legacy, Stephanie sits on the Performing Arts Advisory Council at the University of Notre Dame and has been a member of the Board of Trustees at the Goodspeed Opera House. She has become involved on a producing level with critically-acclaimed productions of *Gypsy* and *Showboat* in London's West End, the revival of *Sweeney Todd* in New York, and Broadway's *Escape to Margaritaville*. As a former Miss Connecticut, she represented our state at the Miss America Pageant in Atlantic City. She holds a Bachelor of Arts, magna cum laude, from Fairfield University and a Juris Doctorate with honors from the University of Connecticut School of Law. Stephanie is the proud mother of two adult children, Valerie and Rick, and lives in Guilford with her wonderful husband, Luke.



KIERSTEN BJORK (*Theatre Manager & Interim Co-Managing Director*) is thrilled to be a part of the Legacy team as Theatre Manager. She is a 2021 graduate of Fairfield University, graduating summa cum laude and Phi Beta Kappa with degrees in Theatre and English. In addition to her work with Legacy, Kiersten does freelance theatre work for the Quick Center for the Arts and Theatre Fairfield. She is also a performer – favorite performing credits include Legacy Theatre: *A Christmas Carol* (Fan/Mrs. Fezzwig/Others), *Joan Joyce* (Young Joan Joyce – BroadwayWorld CT Regional Theatre Nomination: Best Performer in a Musical), *The Tales of Custard the Dragon* (Ink the Cat); Shoreline Theatre Company: *Chicago* (June/Squish"); and Theatre Fairfield *The Spitfire Grill* (Percy), *[title of show]* (Susan – BroadwayWorld CT Regional Theatre Nomination: Best Performer in a Streaming Musical), *Woman and Scarecrow* (Auntie Ah – BroadwayWorld CT Regional Theatre Nomination: Best Performer in a Streaming Play), *Titus Andronicus* (Demetrius), *Fortinbras* (Laertes), and *Authenticity* (Alice). Kiersten's credits also include director, scenic designer, master carpenter, board operator, stage manager, assistant stage manager, and runner on numerous productions, with favorites being *I Do! I Do!* (ASM, Legacy Theatre) and *The Curious Incident of the Dog in the Night-time* (Master Carpenter, Theatre Fairfield).

Legacy Who's Who



SARAH PERO (*Production Manager & Interim Co-Managing Director*) Born and raised in New Haven, CT, Sarah has been involved with local community and professional theatre for 20+ years. Acting at the age of 10, and directing at 16, Sarah received her BFA in Theatre,

with a concentration in directing from the University of Rhode Island. Right after college, Sarah was a part-time drama teacher in New Haven Public Schools and also taught theatre classes with Performing Arts Programs (South Windsor, CT). Sarah then worked at the Music Theatre of CT (Norwalk, CT) School of Performing Arts, wearing many hats as Administrative Manager, Teaching Artist, Director, Music Director, and Choreographer for the school. Sarah also managed the Box Office and was the Resident Sound Designer for MTC's Professional Main Stage. Following MTC, Sarah worked as Administrative Manager at the Downtown Cabaret Theatre (Bridgeport, CT). As a Production Stage Manager for various Theatre Productions in Rhode Island and Connecticut, some of her favorites include: *Tick, Tick Boom*; *Little Women: The Musical*; and *You're a Good Man Charlie Brown*. Most recently, Sarah served as the Production Stage Manager for multiple Legacy productions in the 2021 and 2022 seasons. Sarah is thrilled to officially join the Legacy team as Production Manager.



ANNE RUNOLFSSON (*Development Manager*) has entertained audiences worldwide for the past 35 years. A veteran of the stage and concert venues, her Broadway and National tour appearances include: *Phantom of the Opera* (Carlotta), *Victor/Victoria* (Stand-

by for Julie Andrews and Liza Minnelli), *Les Misérables* (Fantine), *Cyrano: The Musical* (Roxane), *The Secret Garden* (Lili), *Aspects of Love*, and *James Joyce's The Dead* (Gretta). As a soloist, Anne has performed at such iconic venues as The Hollywood Bowl, Carnegie Hall, Radio City Music Hall (with tenor Jose Carreras), The 02 Arena (London, with Julie Andrews), The Concertgebouw (Amsterdam), The Kennedy Center, Wolf Trap and countless others. Anne was awarded New York City's prestigious MAC award for Best Female Singer. Her cabaret appearances include *Birdland*, *54 Below*, *The Green Room 42*, *92nd Street Y*, *The Russian Tea Room*, *Rainbow and Stars*, and Hollywood's *Cinegrill and Gardenia*. Show recordings include: *Les Misérables International Cast*, *Listen to My Heart*, and *You Oughta Be On Broadway*, and a solo album "At Sea." Anne co-wrote and performs in two shows with singer/actress daughter Tess Adams; *The Story Goes On: A Broadway Family Journey* and *Heroine's Song*. Anne made her directorial debut in December 2021 in Los

Angeles with *My Unauthorized Hallmark Movie Musical*. She has also appeared on NBC's *The Blacklist*. Anne is principal partner of Runolfsson Entertainment which includes "Sing With Anne," a vocal coaching practice. She has taught voice and performance at the Orange County School for the Arts in California and New York University.



COLIN SHEEHAN (*Producer of Broadway Concert Series & Community Arts Coordinator*) is a local arts enthusiast and serves as the Arts, Culture & Special Events Coordinator for the Town of Branford, Director of The Branford High School Performing Arts'

Spring Musical, and Co-Founder and Co-Artistic Director of Branford Parks and Recreation Shoreline Theatre Company. He graduated from Branford High School and continued his studies at Wagner College with a B.A. in Theatre and Speech Performance. In 2003, he made his Broadway debut in the closing night production of *Les Misérables*. In '99, Colin appeared numerous times on *The Rosie O'Donnell Show* and worked for three seasons on *The Wendy Williams Show*. Colin has produced, directed, hosted, and performed in the tri-state area and abroad with Broadway Cruises, Nickelodeon Cruises, and R Family Vacations Cruises. Colin is a philanthropist and has hosted, produced and raised funds and awareness for many organizations in Branford and beyond.



MARY LEE WEBER (*Marketing and Community Outreach*) is a Marketing and Communications consultant who has lived in Branford since 1988. She held the position of Director of Marketing and Community Development for the ABC affiliate WTNH-8 for 17 years

where she was responsible for non-traditional revenue and community partnerships. With a local creative team she Executive Produced a short documentary for the Stony Creek Museum called *Born at The Water's Edge*. It features interviews and information about the Thimble Islands and the history of Stony Creek including brief segments about Legacy Theatre, the Stony Creek Fife and Drum Corps and the Quarry. Mary Lee also helped with the Legacy Theatre productions while they were in residence at the Stony Creek Museum in 2018-19. She joined Legacy to help with Marketing and Community Outreach and is thrilled to play even a small part in helping Legacy bring theatre back to Stony Creek.

Legacy Who's Who



JEFF ZEITLIN (*Front of House Manager*)

A long-time resident of Guilford, CT, Jeff's love of theatre was taken to the next level when his daughter was a part of the Guilford High School Theatre Arts program. Jeff served as a Board Member of the school's Theatre Arts

Parents Support. He then became the Box Office Manager and Front of House Advisor for GHSTA. He continues in that volunteer role today. Along with his wife, Alyson, he was an usher at The Ivoryton Playhouse. Most recently, he was a House Manager at The Katherine Hepburn Cultural Arts Center ("The Kate") in Old Saybrook. He first became aware of The Legacy Theatre when attending a couple of fundraisers a few years ago. He was taken by the plans for the historic building and the prospect of bringing high quality Broadway productions and performers to the shoreline. Jeff's community involvement also extends to Guilford A Better Chance where he is a member of the Board of Directors. When not at the theatre, Jeff is Loyalty Manager for IKEA in New Haven, focusing on Public and Community Relations. Jeff looks forward to welcoming theatre-goers from near and far to The Legacy Theatre!



NICK FETHERSTON (*Box Office*

Assistant) is thrilled to be a part of the Legacy team. He is an actor and theater lover, currently living in Hamden, CT. Nick graduated from Quinnipiac University in 2021 with his degree in theater and is also an alumnus of The

National Theater Institute at the Eugene O'Neill Theater Center. Nick's previous work with Legacy includes playing Rosencrantz in the 2018 production of *Hamlet* on the Guilford Green and playing Lysander in the 2019 production of *A Midsummer Night's Dream* on the Branford Green. His most recent credit was playing Don John and The Sexton in *Much Ado About Nothing* with Capital Classics in West Hartford. He is so excited to be taking the next step in his theater journey with Legacy.



**WYETH
ARCHITECTS**

WyethArchitects.com
Architects ^{of the} Legacy Theatre

Guitars
Mandolins

Acoustic
Music
.Org[®]

1250 Boston Post Road
Guilford, CT
(203) 458-8353

Support Legacy Theatre

As a 501(c)3 nonprofit organization, Legacy Theatre relies on the generosity of our donors and supporters to bring performances, classes, job opportunities and more to the shoreline community. Please consider making a tax-deductible donation today, or supporting us through other avenues. Please contact Kiersten Bjork, Theatre Manager, at kiersten@legacytheatrect.org with any questions.



NAMING OPPORTUNITIES

Leave your Legacy in this historic, fully restored, state-of-the-art, gorgeous theatre. Naming Opportunities are still available for seats and more.



DEDICATE A PERFORMANCE

Honor someone special in your life by dedicating a performance at Legacy Theatre. Dedicating a performance is truly a unique way to commemorate a birthday, anniversary, or achievement. (Please Note: Tickets are not included in this Dedicate a Performance Program.)



DONATE

Visit www.legacytheatrect.org/donate
Scan to learn more and to partner with us!

Legacy Theatre is a tax-exempt, 501(c)(3) organization and donations are tax-deductible to the fullest extent allowed by law.

Legacy Theatre Donors

Legacy Theatre gratefully acknowledges 2022 leadership level donors and sponsors providing \$1,000 or more. We hope to earn your continued support in 2023.

Branford Community Foundation
Burry Frederick Foundation
Elena Cahill
Judge Guido and Anne Calabresi
Connecticut Humanities
Connecticut Office of the Arts
The Jane and William Curran Foundation
Google
Guilford Community Foundation
Mr. and Mrs. Jeffrey Hoffman
Liberty Bank
Stella Martin Foundation
The Martyn Foundation
Rick Mayer
Mary Peabody
Ignacio and Joan Rodriguez

James Roday Rodriguez
Secor, Cassidy and McPartland, P.C.
The Seedlings Foundation
Mariah and Bruce Seymour
Jana and Tom Shea
Mr. and Mrs. Curtis Sorensen
Harold S. Spitzer
William Stiefel
Town of Branford
Town Fair Tire
Jan Walzer and David Etzel
Webster Private Bank
Jason Weisenfeld
Dave and Megan Wildstein
Luke and Stephanie Williams

wshu | Public Radio

“Love the
classical music ...
and NPR ... and local
news coverage.”

William & Susan, Wilton, CT

think. learn. share.

wshu.org

Legacy Theatre 2023 Sponsors

as of 2/2/23

Legacy Theatre gratefully acknowledges support from our Corporate and Foundation Supporters

MASTERS OF PUPPETS

THE BURRY FREDRIK
FOUNDATION

BEAUTY AND THE BEAST

THE MARTYN
FOUNDATION

SUNDAY BROADWAY
CONCERT SERIES

JANA AND TOM
SHEA



FAMILY SERIES



*MACK IS BACK! THE MUSIC
OF BOBBY DARIN AND MORE!*



COMMUNITY SPONSORS



Become a 2023 Sponsor!

Please consider including Legacy Theatre in your 2023 marketing efforts.

We have sponsorship opportunities for every budget!

Scan to learn more



COMING SOON



SUNDAY BROADWAY CONCERT SERIES

Sunday, February 26 at 2pm



Tony Award Winner
NIKKI M. JAMES



with
NATE BUCCIERI
at the piano!

Broadway's *The Book of Mormon*
(Tony Award - Nabalungi),
Les Misérables, *All Shook Up*

Live in Person and Virtual Tickets on Sale Now!

Friday, April 21 - Saturday, April 22



Chaz Esposito sings

Mack is Back!
The Music of **BOBBY DARIN**

AND MORE!

**BACK BY
POPULAR DEMAND!**

Tickets on Sale Now!

Box Office: (203) 315-1901
Visit LegacyTheatreCT.org



Valpak is proud to support
The Legacy Theater



What can Valpak do for your business?

Contact us and let's get started building your campaign today!

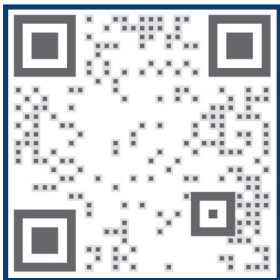
Mark Barillaro

mark_barillaro@valpak.com

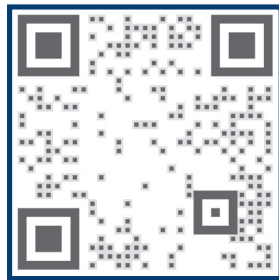
860.552.8109

Save more at Valpak.com!

SCAN FOR VALPAK APP



SCAN FOR MORE INFO



2023 SEASON



February 17-18
THE RAPE OF LUCRETIA
 with the Yale Opera



February 26
NIKKI M. JAMES
 with **NATE BUCCIERI**
 at the Piano!



March 5
MAX VON ESSEN
 with **BILLY STRITCH**
 at the Piano!



March 25-26
THE TALES OF CHRISTOPHER ROBIN & WINNIE-THE-POOH



April 2
EDEN ESPINOSA
 with **JOHN McDANIEL**
 at the Piano!



April 21-22
MACK IS BACK!
THE MUSIC OF BOBBY DARIN & MORE!



April 29-30
A PRINCESS TEA:
 A New Family Musical



May 7
JENN COLELLA
 with **JOHN McDANIEL**
 at the Piano!



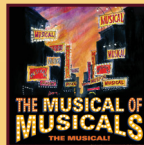
May 25 - June 11
MASTERS OF PUPPETS



June 25
ORFEH
 with **STEVEN JAMAIL**
 at the Piano!



July 2
HUGH PANARO
 with **JOHN McDANIEL**
 at the Piano!



July 13-30
THE MUSICAL OF MUSICALS (THE MUSICAL!)



August 10-27
 Disney's **BEAUTY AND THE BEAST**



September 14 - October 1
THE PLAY THAT GOES WRONG



November 29 - December 10
A CHRISTMAS CAROL

Scan to Learn More and Buy Tickets!



Visit LegacyTheatreCT.org or Call (203) 315-1901
 THE LEGACY THEATRE 128 Thimble Islands Road, Branford, CT