

THE LEGACY THEATRE 2022 SEASON

THE GREAT GATSBY

A LIVE RADIO PLAY

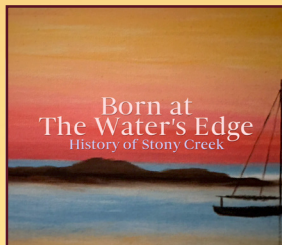
September 15 - October 1



BACK IN TIME
WITH NATALIE HAMILTON
September 9-10



LEGACY THEATRE
PLAY READING FESTIVAL
September 11 & 18



BORN AT
THE WATER'S EDGE
September 17 & 25



LEGACY THEATRE
FILM FESTIVAL
September 19-21



POETIC (FILM)
September 25



NATYAMANDALA:
BHARATANATYAM DANCE CONCERT
October 2

LEGACY 2022 SEASON



MARCH

9-10 *Alcina* with the Yale Opera

APRIL

9 *Born at the Water's Edge* (Film)

28-30 *I Do! I Do!*

MAY

5-14 *I Do! I Do!*

7 *The Tales of Custard the Dragon*

8 Broadway's Ali Ewoldt

19-21 *Zeller & Squires:*

An Evening of One Act Plays

21 *I Love Tacos!*

22 *That Funny Feeling* (1965)

26-28 *Mack is Back!*

The Music of Bobby Darin!

JUNE

2-18 *Deathtrap*

5 Broadway's Eric Santagata

11 *Windywoo and her Naughty*

Naughty Pets (Concert Version)

12 Kevin Flynn: *Fear of Heights*

19 *Abbott and Costello*

Meet Frankenstein (1948)

25 *A Silly Dilly Concert*

29 *Born at the Water's Edge* (Film)

JULY

2 *America's Sweethearts*

3 *On the Town* (1949)

7-8 *Awesomer and Awesomer*

10 *77 U-Turn*

17 Broadway's Jelani Remy

18-22 2022 Summer Intensive

23 *Awesomer and Awesomer*

24 Legacy Playwrights Circle

Festival of Plays

30 *Born at the Water's Edge* (Film)

31 *I am Shakespeare:*

The Henry Green Story (2020)

AUGUST

7 *Happiness is a Warm Blanket,*
Charlie Brown (2011)

11-13 *My Unauthorized*
Hallmark Movie Musical

14 Broadway's Kathryn Allison

18-27 *You're a Good Man, Charlie Brown*

20-21 *Peter & Wendy*

Wheel Life Theatre Troupe

featuring Pilobolus

28 Broadway's Katie Rose Clarke

SEPTEMBER

1-3 *You're a Good Man, Charlie Brown*

4 Broadway's Eric Anthony Lopez

9-10 Back In Time with Natalie Hamilton:
Singing 100 Years of Women
In Music

11 & 18 2022 Legacy Play Reading Festival

15-30 *The Great Gatsby: A Live Radio Play*

17 *Born at the Water's Edge* (Film)

19-21 2022 Legacy Film Festival

25 *Poetic* (Film)

25 *Born at the Water's Edge* (Film)

OCTOBER

1 *The Great Gatsby: A Live Radio Play*

2 Natyamandala:
Bharatanatyam Dance Concert

15 The Legacy 2022 Gala:
Fly Me to the Moon

NOVEMBER/DECEMBER

11/30-12/11 *A Christmas Carol*

Explore the

2022 SEASON



Letter from the Artistic Director



Our Cherished Audiences,

I am particularly excited this month to share our exploration of the “behind the scenes” aspects of creating great art: from *Back in Time*, exploring iconic female singer/songwriters, to a playwriting festival of plays fresh from the pens of living playwrights, to our first annual film festival featuring talkbacks and panels from experts, to Broadway performers sharing behind the scene stories, I have aimed to conclude this fall with a closer look for our audiences into the mind and process of the artist.

To feature this concept, our Mainstage production this month invites you to be our “live studio audience” in the 1940s! I have been thrilled to work with the world-produced playwright Joe Landry on the professional premiere of *The Great Gatsby: A Live Radio Play*. From the moment you enter the box office into the theater, we aim to invite you into an immersive experience reflective of Stony Creek in the ‘20s, ‘30s and ‘40s in this very same theatre (then aptly called the “Stony Creek Theatre”). With such programming of new films and plays and an immersive piece which features the radio days of yore in this historic theatre, we invite you to celebrate the old and the new this month at Legacy!

As ever, thank you so much for being a part of our audience.


Warmly,

Keely Baisden Knudsen
Artistic Director
Co-Founder, Legacy Theatre

Follow Legacy on social media!

 facebook.com/LegacyTheatreCT

 @legacytheatrect

 @legacytheatrect

Legacy Wi-Fi

Network: LTC GUEST

Password: GestWiFi!

At This Theatre



c. 1890s



c. 1930s



c. 1930-1940s

- 1866 A small, non-denominational church was built at 128 Thimble Islands Road in the village of Stony Creek in Branford.
- 1900 A fire damaged the property.
- 1914 The land is sold to William Howd and the foundations were laid for a silent movie theater called Idle Hour Moving Pictures.
- 1923 A theater group belonging to the Stony Creek Church of Christ called the Parish Players was forming.
- 1928 The Parish Players purchased the movie theater space, and repurposed it to “live” theater for the first time. Productions included the world premiere of *Death Takes a Holiday* as well as *Private Lives*, *Merrily We Roll Along* and *Pygmalion*.
- 1938 Orson Welles wrote and directed a silent film to accompany his direction of William Gillette’s 1894 comedy *Too Much Johnson* at what was now the Stony Creek Theatre.
- 1946 The theater building became home to Panix/Materna-Line, Inc., a designer and manufacturer of corsets and the like.



Stony Creek Theatre production of *Too Much Johnson* (1938)

At This Theatre



1946



c. 1980s - 2010s

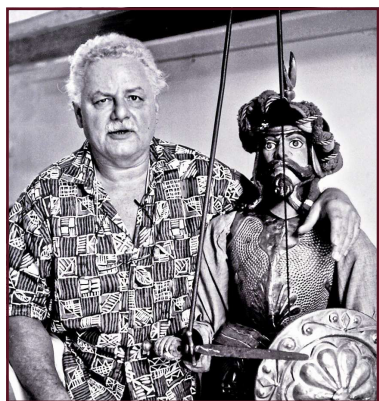


2021

1961 Grace Weil established the space as the Stony Creek Puppet Museum with life-sized Sicilian puppets direct from performances in Italy. Grace Weil's son, Jim, and Italian Salvatore Macri, were the next to put their mark on the theater. With their rare and cherished skills of puppetry, the Italian puppets came to life.

1970s-
2010s Classes and theater were in abundance under Jim Weil, Barry Fritz, the Alliance Theatre, Joe Davis and others. Passing on the legacy of theatre to others is a stronghold of the Legacy Theatre, which purchased this theater in 2013--and now you are part of its ongoing Legacy.

2021 Legacy Theatre, a repertory company with a conservatory arm, opened the restored theatre for performance and training. From nothing but a dream and a vision to now teams of committees, boards of directors and advisors, actors and teachers, this shoreline gem has been restored and revitalized. We at Legacy invite you to continue with us as we commemorate the past and spotlight the future of this special stage.



Jim Weil
(1960s-1970s)

Explore more about
AT THIS THEATRE
on the Legacy website!

Photos, video and more!

Scan This
QR Code:



Or visit
LegacyTheatreCT.org/history

FALL 2022 CLASSES

September 17- November 19
(10-week sessions)



Classes at Branford Parks and Rec,
with a final showcase at Legacy Theatre!



TODDLER DANCE, STORYTIME, AND DRAMA (Ages 2-5)
taught by Chelsea Dacey

YOUNG APPRENTICE CLASS: ACTING (Ages 6-11)
taught by Chelsea Dacey

YOUNG PROFESSIONALS: ACTING (Ages 12-17)
taught by Chelsea Dacey

LEGACY THEATRE'S ADULT IMPROV CLASS (Ages 18+)
taught by Mary Lou Lauricella

MUSICAL THEATRE PERFORMANCE (Ages 18+)
taught by Cathyann Roding

Space is Very Limited!
Register today at
LegacyTheatreCT.org/classes



THE LEGACY THEATRE

Keely Baisden Knudsen
Artistic Director

Julianne Alberty
Managing Director

presents



Back in Time... encompasses songs from the 1920s to the 2020s – From Bessie Smith, to Billie Holiday, to Barbra Streisand, Linda Ronstadt to Lizzo and Lady Gaga, and some of Natalie's original songs as well.

Lighting Designer KEVIN MICHAEL REED
Sound Designer NICK MORCALDI



NATALIE HAMILTON is a singer, composer and multi-instrumentalist that has been praised as "Evocative" with a "Stunning Voice" by *Ink 19 Magazine* and "Marvelous, Feminine and Tough" by music journalist Thom Yurek (*Rolling Stone*, *SPIN Magazine*). With a velvet voice that effortlessly spans over four octaves, and melodic jazz/pop piano playing, Hamilton's compositions meld the "sophistication of jazz" with the "timeless intimacy of folk" (*Ink 19*). In July 2021, Natalie Hamilton, and her song "Show You My Love," were included in *The Essential Western New England Songbook* as "one of the best songs ever written by an artist from the New England area." "Show You My Love," the EP, is now available on Bandcamp and everywhere else you can buy/stream music. Hamilton can be seen regularly live-streaming on her Twitch Channel, at www.Twitch.tv/NatalieHamiltonMusic and performing

at venues across the US. For more info or booking: info@nataliehamilton.com



THIERRY ARPINO (Drums) Born in Paris, Aug, 24, 1961, Thierry Arpino stands atop a family drumming lineage which spans four generations. His father, the renowned Andre Arpino, introduced him to the drums at the age of three. A musician's musician, Thierry also studied classical percussion, piano, and harmony. He is a graduate of the prestigious St. Maur National Music Academy in France. In the summer 1980, Thierry continued his musical education at Berklee College of Music in Boston, MA, USA, where he was invited to study with big band master Herb Pomeroy and master drums teacher Bob Kaufman. Thierry's career has been punctuated by stints with such notables as Lisa Fischer (The Rolling Stones), Stanley Jordan, Jean-

Back In Time with Natalie Hamilton: Singing 100 Years of Women In Music

September 9-10, 2022

Luc Ponty, Joe Beck, Larry Coryell, Bill Evans, to name but a few. Although much can be said and understood of Thierry Arpino's virtuosity, what remains unquantifiable is the musical liberation and sheer joy he displays in each and every performance.



KAREN HOGG (Mandolin) is a multi-instrumentalist, writer, and educator hailing from Southern Connecticut. At the beginning of the year, she released her first book for Berklee Press, Berklee Solo Ukulele.



DAN LIPTON (Piano & Conducting) conducted *The Band's Visit* and Sting's musical *The Last Ship* on Broadway. He has arranged music and led bands for Kelli O'Hara, Audra McDonald, Brian d'Arcy James and many more, performing at The White House,

Carnegie Hall, Lincoln Center, Kennedy Center and on PBS, NPR, *Today* and *Late Show with David Letterman*. Music supervision and/or orchestrations: *An Officer and a Gentleman* (2021-22 US tour), *The Other Josh Cohen* (off-Broadway), The Drama Desk Awards. He scored the film *All These Small Moments* starring Molly Ringwald; pianist for *Passing*, *The Marvelous Mrs. Maisel* and several Grammy-nominated albums, including *The Full Monty* and *Dirty Rotten Scoundrels* original Broadway cast recordings. *Jukebox Saloon Vol. 2*, his album of jazz-pop covers with singer Colby Beserra, is streaming everywhere. danlipton.com



MICHAEL STARK (Guitar) Educated at Eastman School of Music and Berklee College of Music before graduating from Musicians Institute. He has been creating music professionally for over 30 years. Stark's original music was featured in "Guitar Player" magazine.

He has shared the stage with world class musicians like Kenny Kirkland, John Patitucci, Jeff Tain Watts, Ronnie Burrage, Wallace Roney, Frank Lacy, Essiet Okon Essiet, Joe Corsello and many more. Mike is currently working in multiple ensembles playing originals as well as covers from all genres of music with emphasis on Jazz, Blues, Soul, Funk and more.



IKE STURM (Bass) Bassist and composer Ike Sturm was raised in a musical home in Wisconsin and studied jazz, classical bass, and composition, while earning undergraduate and graduate degrees at the Eastman School of Music. He has performed

with Gene Bertoncini, Theo Bleckmann, Ingrid Jensen, Donny McCaslin, Bobby McFerrin, Ben Monder, Maria Schneider and Kenny Wheeler, among others. Ike's ambient acoustic duo Endless Field, with guitarist Jesse Lewis, has been featured on WBGO New York's *The Checkout* and on NPR. Their eponymous 2017 album was released on Biophilia Records and includes Grammy-winning soloist Donny McCaslin. The project aims to engage others in environmental awareness and activism through music and volunteer activities. In 2019 Ike and Jesse trekked to Utah to record a live wilderness album using a solar-powered battery, collaborating with National Geographic videographers and L.A. sound engineers. Ike is currently touring, finishing a new album, and composing several new 2022 large-scale commissions for choir and string orchestra to be premiered and recorded in New York and Israel.



TABRECA WOODSIDE (Backup Vocalist) is a Jazz Singer and native New Yorker. She earned a degree in Jazz Composition from Five Towns College and studied Music Education at Berklee College of Music. During her studies at Berklee College of Music,

she experienced her first major jazz gig as lead in Christian McBride's *The Movement Revisited*. Over the years, she has worked with some notable artists such as Mariah Carey, Edwin & Walter Hawkins, Cyrus Chestnut, Catherine Russell, Cecile McLorin Salvant, and Montell Jordan. In 2019, she returned to New York to fulfill her passion of jazz and spirituality. She now performs solo and with various artists across diverse genres. Tabreeca is also part of the connect.fairh community as a facilitator of weekly creativity and jazz exploration groups.

SPECIAL THANKS FOR BACK IN TIME...

Natalie would like to give a special thanks to The Legacy Theatre and its entire hard-working, dedicated crew. She'd also like to thank Adeline Riccio and George Lesiw, for their behind the scenes efforts to bring this music to life, and lastly, to Josette Marie Davids for her generous contributions to make this show a reality.

Finish what you started. At Albertus.



Have some college credits?
Complete your degree
and advance your career!

- 17 programs in an online or flexible evening format
- Generous transfer credit policy
- Small class sizes to ensure personalized attention
- In-demand curriculums to keep you competitive

Your way to fit **your** schedule.

Watch Ariel's story



ALBERTUS MAGNUS COLLEGE

Visit albertus.edu/finish or call 1-800-394-9982

700 Prospect Street, New Haven

COMING NEXT TO LEGACY

Last Season's SOLD OUT Hit Production Returns!



A Christmas Carol

November 30 - December 11

by CHARLES DICKENS

Adapted & Directed by KEELY BAISDEN KNUDSEN

Music by DAVID BELL

This classic tale by Charles Dickens, whose forward in the novel states, "I have endeavoured in this Ghostly little book, to raise the Ghost of an Idea, which shall not put my readers out of humour with themselves, with each other, with the season, or with me. May it haunt their houses pleasantly, and no one wish to lay it. - C. D." is a timeless story that indeed has pleasantly haunted generations of audiences around the globe. This story illuminates the journey of one Ebenezer Scrooge and his guided self-reflection amidst the Christmas season in 1800s England.

Tickets at LegacyTheatreCT.org



The Great Gatsby: A Live Radio Play

September 15 - October 1, 2022

THE LEGACY THEATRE

Keely Baisden Knudsen
Artistic Director

Julianne Alberty
Managing Director

presents

The PROFESSIONAL PREMIERE of



Adapted for the Stage by JOE LANDRY
From the Novel by F. SCOTT FITZGERALD
Original Music by KEVIN CONNORS

with

DAVID BELL
ERIK BLOOMQUIST*
DAN FRYE
SKYE GILLESPIE
MARY MANNIX
JOSIAH ROWE

Scenic & Lighting Designer JAMIE BURNETT *Costume Designer* JIMMY JOHANSMEYER
Props Designer ERICA PAJONAS *Sound Designer* ADAM JACKSON *Master Carpenter* RICH BURKAM
Production Stage Manager SARAH PERO *Assistant Stage Manager* LAUREN ELISE FISHER
Associate Director NOAH GOLDEN *Music Director* DAVID BELL *Assistant Director & Dramaturg* JOE LANDRY
Director KEVIN MICHAEL REED

Produced by special arrangement with Playscripts, Inc.
www.playscripts.com



*Actors appear through the courtesy of Actors' Equity Association, the Union of Professional Actors and Stage Managers in the United States



We know you're safeguarding **more than just your assets.**

**We can help you preserve and protect your wealth,
at your pace.**


Time to look out for more than your future? Our advisory practice is about the relationship we forge with you: conserving your assets, understanding the vision for your loved ones and seeing the big picture to fulfill your goals.

John H. Driscoll, Jr.
860.519.8183
jdriscoll@websterbank.com



WebsterBank®

[websterbank.com](https://www.websterbank.com)

Investment, trust, credit and banking services are offered by Webster Private Bank, a division of Webster Bank, N.A. Investment products offered by Webster Private Bank are not FDIC or government insured; are not guaranteed by Webster Bank; may involve investment risks, including loss of principal amount invested; and are not deposits or other obligations of Webster Bank. Webster Private Bank is not in the business of providing tax or legal advice. Consult with your independent attorney, tax consultant or other professional advisor for final recommendations and before changing or implementing any financial, tax or estate planning advice. All credit products are subject to the normal credit approval process. Webster Bank, the Webster Bank logo and the W symbol are trademarks of Webster Financial Corporation and Registered in the U.S. Patent and Trademark Office. Webster Bank, N.A. Member FDIC. Equal Housing Lender  © 2022 Webster Financial Corporation. All Rights Reserved.

Cast

(in alphabetical order by actor)

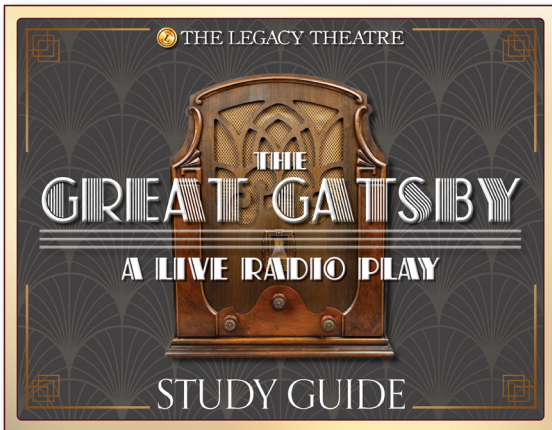
Nelson North (George Wilson, Partygoer 2, Gatsby's Butler, Policeman, Ewing Klipspringer)	DAVID BELL
Tony Hunter (Jay Gatsby)	ERIK BLOOMQUIST
Jake Laurents (Nick Carraway)	DAN FRYE
Lana Sherwood (Jordan Baker, Buchanans' Maid, Myrtle Wilson, Well-Dressed Woman, Gatsby's Gardener)	SKYE GILLESPIE
Sally Applewhite (Daisy Buchanan, Catherine, Partygoer 1, Michaelis)	MARY MANNIX
Freddie Fillmore (Nick's Father, Tom Buchanan, Train Conductor, Owl Eyes, Meyer Wolfsheim, Henry C. Gatz)	JOSIAH ROWE

Setting

TIME: Summer, 1942

PLACE: WELI's Satellite Studio at The Stony Creek Theatre

THE GREAT GATSBY: A LIVE RADIO PLAY IS PERFORMED WITHOUT AN INTERMISSION



Explore
the Study Guide

History, synopsis, video and more!



www.gatsbyradioplay.com/study-guide

Who's Who

The Great Gatsby: A Live Radio Play

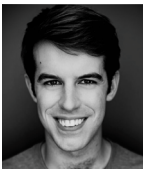
September 15 - October 1, 2022



DAVID BELL (*Nelson North & Music Director*) has been active for many years as a musician and actor. He previously served as music director for productions at the Ivoryton Playhouse, Whitney Players, and for several area schools. This is one of his first outings as a composer/arranger, and he has thoroughly enjoyed working with Keely and enhancing her beautiful melodies and lyrics. Dave's other identities include Minister of Music at Seymour Congregational Church, Accompanist for the Guilford Public School choruses, avid long-distance hiker and trails volunteer for various land conservation entities, and overall decent fellow.



ERIK BLOOMQUIST (*Tony Hunter*)
Legacy: *Tonight, Tonight! A Shakespeare Cabaret*. Regional: Hartford Stage: *Rear Window* (world premiere w/ Kevin Bacon), *Hamlet*, *Ether Dome*, *A Christmas Carol*. Ivoryton: *Calendar Girls* (US premiere), *The Game's Afoot*, *Memphis*, *La Cage Aux Folles*, *A Christmas Carol* (w/ Kathleen Turner). Playhouse on Park, TheaterWorks, Capital Classics, Valley Shakespeare. Stage Directing: *The 39 Steps* (Ivoryton); *Footloose* (Ozark Actors Theatre); *Bye, Bye Birdie* (Priscilla Beach Theatre); *Carrie*, *Into the Woods*, *Rent*, *Heathers* (Trinity College). Film/TV: *She Came from the Woods*, *Intermedium*, *Weekenders*, *Night at the Eagle Inn*, *Christmas on the Carousel*, *Ten Minutes to Midnight*, *Long Lost*, *The Mystery of Matter*, *High Heat*, *Midas*, *The Cobblestone Corridor* (PBS — 2x Emmy Winner). Education: Trinity College, London Dramatic Academy. Other: 50 Audiobooks, "40 Under 40" *Connecticut Magazine*. @ErikCBloomquist. For Cliff.



DAN FRYE (*Jake Laurents*) is incredibly excited to be returning to the Legacy stage this season. Some of his recent projects include performing in the Legacy Theatre's *You're a Good Man, Charlie Brown* (Snoopy) and Shoreline Theatre Company's *The 25th Annual Putnam County Spelling Bee* (Chip Tolentino). A big thanks to his family for their constant support, and the Branford theater community as a whole, without which Dan would never have gotten on stage.



SKYE GILLESPIE (*Lana Sherwood*) [she/her] is so excited to be making her Legacy Theatre Debut! Recent regional theatre credits include *You're a Good Man, Charlie Brown* (Sally/Dance Captain), *The Honky Tonk Angels* (Pit Singer), *The Light Princess*

(Female Swing), and *The Wizard of Oz* (Female Swing/Assistant Choreographer) at the Summer Theatre of New Canaan. In May, Skye graduated Summa Cum Laude from Muhlenberg College with her BA in Theatre and Dance. She thanks her friends and family for their constant support. skygillespie.com



MARY MANNIX (*Sally Applewhite*) is thrilled to return to the Legacy, having debuted in last year's inaugural season as Brandy in the world premiere of *Just Desserts*. She is a founding member of Pantochino Productions, and has been awarded two Broadway World Connecticut Awards for her work with the company. Mary also appeared in last fall's Guilford Performing Arts Festival, portraying Tina in a staged reading of Emily Breeze's *The Homewrecker*. Favorite past roles include Maria in *West Side Story*, Susy in *Wait Until Dark*, Charlotte in *A Little Night Music*, Jaycee Rae in *The Waffle House Five*, and Bernice Britchard in *Checking in on Charles*. A recipient of the Goodspeed Guild Music Theater Award, Mary holds a Bachelor of Music in Musical Theatre from The Catholic University of America. She resides in Killingworth with her husband Scott, and their four children, Sean, Rowan, Nora, and Brennan. Endless gratitude and much love to her family for their support.



JOSIAH ROWE (*Freddie Fillmore*) is delighted to return to Legacy's stage. Josiah previously played Porter Milgrim in *Deathtrap*, Claudius in Legacy's *Hamlet*, Bob Cratchit/Narrator in *A Christmas Carol*, and Custard in *The Tales of Custard the Dragon*. Other past roles include Atticus, *To Kill a Mockingbird* (Landmark Community Theatre, Thomaston); Scarecrow, *The Wizard of Oz* (Thomaston Opera House); Bhaer, *Little Women*, Lefou, *Beauty and the Beast* (Hartford Children's Theatre); Kaffee, *A Few Good Men* (Norris Little Theatre); and Pirate King, *Pirates of Penzance*, (Alliance Theatre). He has also appeared in *Amadeus*, *The Producers* (Warner Theatre); *Macbeth*, *Merry Wives of Windsor*, and *The Learned Ladies* (Capital Classics). However, his favorite role is Daddy to Ashlin (10), Diana (7) and Verity (3). Deep love and gratitude to Erin.

KEVIN MICHAEL REED (*Director*) is a theatre director & designer exploring the intersection of art & technology in performance. His production credits include producer, director, playwright, dramaturg & Lighting & AV designer. Recent directing credits include: *I Do! I Do!* (Legacy Theatre), *X* (The Lir), *Shadows* (Theatre Technis), and *Version 2.0* (Leicester Square Theatre). Kevin has collaborated in various roles in community and professional

theatre productions in Europe and the United States from Off West End to New York and has toured Ireland and Europe in various technical and artistic roles. He has consulted and technical directed live streamed productions, conferences & symposiums for various theatre companies throughout the US & Ireland. Kevin holds a BFA in Photography from the Fashion Institute of Technology (SUNY), a MA in Playwriting from City, University of London, and MFA in Theatre Directing from The Lir, National Academy of Dramatic Art. kevinmichaelreed.com

JOE LANDRY (*Assistant Director, Dramaturg & Playwright*) is the author of several plays including *It's a Wonderful Life: A Live Radio Play* (named one of the top-ten most produced plays by *American Theatre Magazine*). His other "A Live Radio Play" adaptations include *Vintage Hitchcock*, *Meet Me in St. Louis*, *War of the Worlds: The Panic Broadcast* and *A Christmas Carol*, published through Playscripts/Broadway Licensing and Concord. Other plays include *The Wicked Stage*, *Reefer Madness*, *Numb* and *Hitchcocked!* He attended Playwrights Horizons/NYU and has taught playwriting at Sacred Heart University. Joe is thrilled to be working with Legacy on this production, where he also serves as graphic designer, another of his passions. Special thanks to Barbara Meyer, to whom his adaptation of *Gatsby* is dedicated. Cheers and enjoy the show, old sport! www.joelandry.com

NOAH GOLDEN (*Associate Director*) [he/him] is honored to be making his Legacy debut. A native of Guilford, Noah has been involved in theater all his life. He has worked as a producer (Fuse Theatre of CT), director (The Orange Players), assistant director (A Shared Stage Productions), writer (Vintage Soul Productions, Long Wharf's New Haven Play Project), and actor (Swing Bridge Arts Alliance, A Shared Stage Productions). Noah was the editor and co-creator of *A Midsummer Night's Dream: The Rewired Musical*, which was selected for Legacy's film festival. He will next direct Jason Robert Brown's *Songs For A New World* for Fuse Theatre of CT this November in New Haven. During the day, Noah is a video producer for Yale School of Medicine.

RICH BURKAM (*Master Carpenter*) came to Connecticut to study music and music recording at UNH. He played in bands such as 4:20, Space Cushion, and Over The Line. His studies continued, learning to be a luthier under Barry Lipman and Chris Tatalias, giving him a taste for fine woodworking. Richard now owns a woodshop that makes fine furniture, in a space which is shared with lighting designer Jamie Burnett. Together they have built sets for many production companies, including Elm Shakespeare, Yale Baroque Opera Project, and many small black box theater productions.

JAMIE BURNETT (*Scenic/Lighting Designer*) is a graduate of Carnegie Mellon University, recipient of the 2005 New Haven Arts award, and Founding member of The Elm Shakespeare Company. Lighting Designer at Elm Shakespeare for 26 years and Set Designer until 2009. Lighting Design credits include International Festival of Arts and Ideas 2018, *Requiem for an Electric Chair*; Iseman Theater 2017, Never Stand Still. CCT: *Skeleton Crew*, *Rasheeda Speaking*, *Jesus Hopped the A Train*, *Sunset Baby*, *Topdog/Underdog*. SCSU: *Stop Kiss*, *Much Ado About Nothing*, *The Boyfriend* and *Our Country's Good*. SHU: *In The Heights*, *Jesus Christ Superstar*. Citywide Open Studios: New Haven Armory; Projects2k: Stamford Train Station Façade Lighting; Producer/Lighting Designer/Production Manager for *Terra Tractus (The Earth Moves)*, (2005) *Terra Mirabilia*, (2001) *Terra Lumina* and *Terra Continuum* (1999): performed in the Stony Creek Granite Quarry; PNM's Branford *Luminata* (2010) lighting Branford Green Town Hall. His company, Luminous Environments, specializes in theater and TV studio renovations and public art installations involving specialized lighting. Recent projects: Branford HS Theater, Fairfield Community Theater, and Legacy Theatre.

LAUREN ELISE FISHER (*Assistant Stage Manager*) is a holistic theatre artist based out of New Haven, CT. Primarily a performer and stage manager, she's over the moon to be joining Legacy Theatre for this production of *Gatsby!* Selected credits include Kaliope in *She Kills Monsters* (CT Rep), assistant stage manager for *Always... Patsy Cline* (Mountain Playhouse), and COVID-19 Safety Manager for *Mistresses* (off-Broadway workshop). UCONN Drama '22. NMTI '19. Keep up with Lauren on Instagram: @AllFishSwim.

ADAM JACKSON (*Sound Designer*) is excited to be a part of Legacy's second season and to work on his 50th production overall! Favorite roles include Henry David Thoreau in *The Night Thoreau Spent in Jail* (2017), Farquaad in *Shrek* (2018), and Ebenezer Scrooge in *A Christmas Carol* (2018). Adam is a senior at Western Connecticut State University studying Music Education with a concentration in classical trombone. He works on the WCSU student crew and runs sound for The River Church in Danbury. Adam has done technical theatre design work for Shoreline Theatre Company, Walsh Intermediate School, Branford High School Fall Play and Spring Musical, Ivoryton Playhouse, WCSU Opera, and most recently worked as the A1 Sound Engineer for Elm Shakespeare Company's production of *The Tempest*.

JIMMY JOHANSMEYER (*Costume Designer*) is excited to be back at The Legacy Theatre, after being seen in *Just Desserts*. Most recent design credits include *Pirate Schmirate!*, *Rough Crossing*, *Saturday Night Fever*, *Newsies*, *The 39 Steps*, *La Cage Aux Folles* and *Footloose*. His work has also been seen at Cortland Repertory Theatre, Allenberry Playhouse, Penobscot Theatre Company,

Who's Who

The Great Gatsby: A Live Radio Play

September 15 - October 1, 2022

Downtown Cabaret Theatre, Gateway Playhouse, Theatreworks New Milford, Stamford Center for the Arts, The Emelin Theatre, Tampa's Gorilla Theatre, The Theater Barn and at Off-Broadway's American Theater for Actors. Jimmy is also co-founder and producer of the award-winning Pantochino Productions Inc. in Connecticut.

ERICA PAJONAS (*Props Designer*) Legacy Theater: *Deathtrap* (Props Coordinator & Assistant Stage Manager), *A Midsummer Night's Dream* (Hippolyta & Mustardseed). Quinnipiac University: *Thebes: A New Musical* (Laius), *Proof* (Catherine), *Macbeth* (Lennox & Doctor, Props Master), *Thom Pain (based on nothing)* (Producer), *The Lifespan of a Fact* (Props Master), *Love & Information* (Ensemble), *Bad Jews* (Set Designer), *Seven Minutes in Heaven* (Run Crew), *A Midsummer Night's Dream* (Fairy) New Play Festival 2019: (Stage Manager, *Last Words*). Education: Quinnipiac University, Psychology and Theater double major. Awards: Alpha Psi Omega Theater Honors Society, Psi Chi Psychology Honors Society.

KEVIN CONNORS (*Original Music*) has been a musical theatre composer and director for over 30 years. Off-Broadway credits include *Prime Time Prophet*, *Jukebox Saturday Night*, *The Abandoned Loves of Frederick R.*, *Lover: The Valentino Musical* and *Babes Off Broadway*. He also penned music and lyrics for Joe Landry's *It's A Wonderful Life: A Live Radio Play* and *Mothers and Sons*. Directing credits include *Play Like a Winner* (Off-Broadway NYMF award-winner), *Cat on a Hot Tin Roof* (BroadwayWorld award-winner), *Ragtime* and *Falsettoland* (CT Critics' Circle Director winners). He is the two-time recipient of the Tom Killen Award for Outstanding Contribution to Connecticut Professional Theatre. Mr. Connors co-founded Music Theatre of Connecticut in Norwalk in 1987 where he still serves as Executive Artistic Director. www.kevin-connors.com

PLAYSCRIPTS, INC. (*Licensing*) was formed in 1998 by playwrights Doug and Jonathan Rand as an independent theatrical agency to represent a great diversity of playwrights, composers and lyricists. Their commitment to representing artists through innovative channels with a specific focus on creating opportunities for audiences to connect with their great work has spanned two decades and has expanded into representing over 1000 of the live theatre industries most notable contributors. Playscripts is an imprint of Broadway Licensing, a full-service theatrical licensing and production group. Playscripts, Inc. strives to curate a catalog of plays that meets the needs of theater makers, and exceeds the expectations of audiences. They are at the forefront of play publishing, providing a unique and extensive suite of services for playwrights and customers alike. Using technology, innovation and creativity, Playscripts, Inc. forges connections between playwrights and new audiences.

SPECIAL THANKS FOR *THE GREAT GATSBY: A LIVE RADIO PLAY*

Vinnie Penn (WELL), Kevin Connors,
Kelly LeClair

Contact Legacy Theatre

Box Office: (203) 315-1901
Email: Info@LegacyTheatreCT.org
Website: www.LegacyTheatreCT.org

 facebook.com/LegacyTheatreCT

 [@legacytheatrect](https://www.instagram.com/legacytheatrect)

 [@legacytheatrect](https://twitter.com/legacytheatrect)



Your Giving Your Way

Taking your giving to the next level

A donor advised fund at The Community Foundation is your personal account for charitable giving.

It offers you the flexibility to pool and invest a variety of charitable assets and the convenience of supporting charitable organizations when and where you choose.

Learn more at cfgnh.org/dafnow or call 203-777-7071.



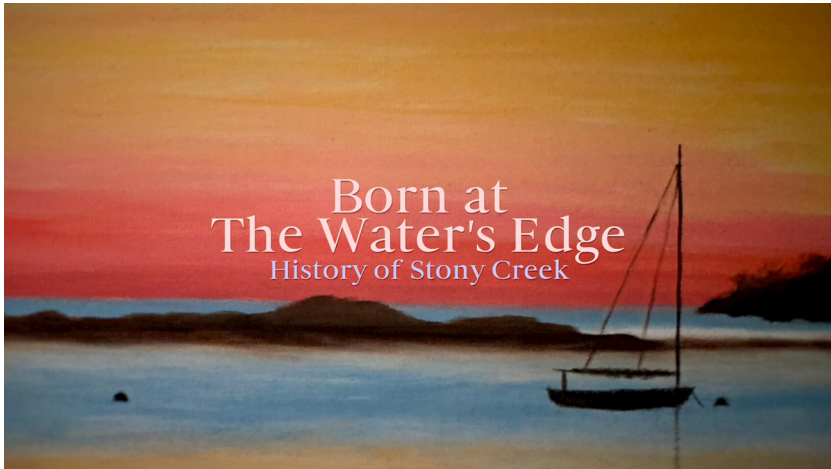
The **COMMUNITY** Foundation *for* Greater New Haven

Work With Us!

Learn More at
LegacyTheatreCT.org/now-hiring
and Apply Today!



THE LEGACYTHEATRE 128 Thimble Islands Road, Stony Creek, CT



Director DANA SPRINGER
Cinematographer MIKE ZARITHENY
Narrator CHRIS VELARDI
Executive Producer MARY LEE WEBER

The Stony Creek Museum presents: *Born at The Water's Edge*, a Stony Creek History Documentary. Featuring interviews with "Creekers" and individuals who provide insight into how the village of Stony Creek has evolved.

Learn about the Quarry Workers, the vacationers, the actors, and the artists who made Stony Creek their home. Enjoy beautiful drone shots of the Thimble Islands and take a look at the architecture, hear the Stony Creek Fife and Drum Corp, and find out about people who make their living off the water.

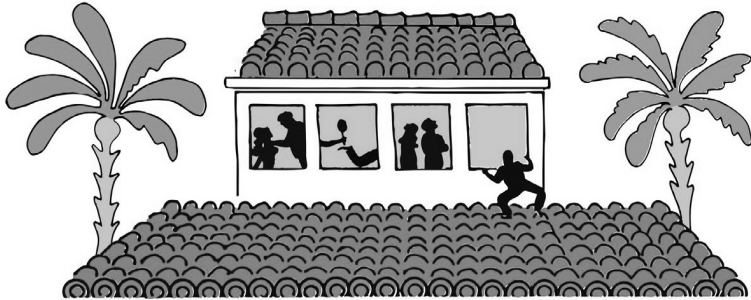
The screenings at Legacy Theatre include a special feature called "Faces of the Creek," where you meet some fun Stony Creek individuals with stories to tell.



Castle Craig Players

Kicking Off Our 30th Anniversary Season!

NEIL SIMON'S HILARIOUS COMEDY



CALIFORNIA SUITE

Two Weeks Only! OCTOBER 14-23

And also coming this season:



Almira F. Stephan Memorial Playhouse 59 West Main St, Meriden
Cabaret Style with Table Seating! Bring Your Own Food & Drinks to enjoy!

TICKETS: CASTLECRAIGPLAYERS.ORG

ALTERNATIVE STARZ
PRODUCTIONS

TRILOBITE
PICTURES

HANDS AND FEET
PRODUCTIONS

presents



Stories and Poems by EDGAR ALLAN POE

A Short Biography
Annabel Lee
The Tell-Tale Heart
The Conqueror Worm
Masque of the Red Death
The Haunted Palace
The Raven

Illustrations by JOSUE CHINCHILLA
Red Death Score by TIMOTHY STONE
Audio Recording and Mixing by JOE MANGO
Editing and Direction by PETER BRADLEY
Produced and Narrated by MICHAEL SAYERS

*The Oldest Continuously
Running Suburban
Trolley Line in the USA*

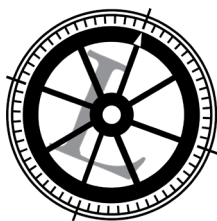
*A National
Historic District*



THE SHORE LINE TROLLEY MUSEUM

Operated by the
BRANFORD ELECTRIC RAILWAY ASSOCIATION

17 River Street in East Haven
203.467.6927 shorelinetrolley.org



WHEEL LIFE THEATRE TROUPE



**Introducing a theatre troupe for those who ambulate with
crutches or use wheelchairs and their siblings!**

*Email info@LegacyTheatreCT.org
to enroll in this free and ongoing program*



Legacy Who's Who



KEELY BAISDEN KNUDSEN (*Artistic Director & Co-Founder*) An award winning director, Keely has performed, directed, and choreographed internationally in plays, musicals, operas, and dance companies in hundreds of theatrical productions

and has performed in 48 of the United States and in the UK. Realizing her vision of a new theater company on the Connecticut Shoreline, Keely's ideals of inspiring, inclusive work that uplifts the human spirit and connects communities formalized in the creation of the Legacy Theatre with Co-Founder Stephanie Stiefel Williams, a performing colleague and dear friend. Keely has directed, choreographed, and taught a myriad of performing arts courses at such institutions as Quinnipiac University, Yale University, Fairfield University, Hartt School of Drama, Southern Connecticut State University, Westminster College, and was the Director of Education of New Haven's acclaimed Elm Shakespeare Company for several years. Additionally a composer/lyricist and playwright, she is currently collaborating on two musicals and is a member of ASCAP. Her directing has been heralded by the Arts Paper as "...visually striking, emotionally moving" and "captivating" and of her direction of Hamlet it was said, "Knudsen has made the notoriously difficult Shakespearean language accessible." Her creation of the Wheel Life Theatre Troupe has been an especially rewarding program as she acts and directs with those who ambulate with crutches and wheelchairs. Her BFA is from New York University's Tisch School of the Arts, at which she graduated first in the class, and she received her Masters Degree in Drama on full scholarship from The Royal Scottish Academy of Music and Drama in Glasgow. Keely, her husband Brian, and five children (Saviah, Liviana, Wynter, Emery, and Reeves) reside in Guilford, CT, where she thoroughly enjoys running the Legacy with a tremendous staff and community support.



STEPHANIE STIEFEL WILLIAMS (*Co-Founder & Chairperson of the Board*) is an active and versatile performer in musicals, concerts, and plays and has appeared in numerous locations throughout the Northeast. A member of Actor's Equity Association, she has appeared professionally in a variety of roles at venues such as Broadway's Marriott Marquis, Legacy Theatre, Hartford Stage Company, Foxwoods' Fox Theatre, Atlantic City's Tropicana, Turning Stone Casino, and the Garde Arts Center. Among these roles, her favorites include Aldonza in *Man of La Mancha*, Anita in *West Side Story*, Lola in *Damn Yankees*, Maria in *The Sound of Music*, and Guenevere in *Camelot*. Although her professional focus has been in musical theatre,

she also has been engaged frequently as a concert soloist, as well as an a cappella ensemble singer. Locally, Stephanie is a proud founder, repertory member, and trustee president at Legacy Theatre where she recently starred in the critically acclaimed 2022 production of *I Do! I Do!*. Last year, she was a featured performer in Legacy's *Barefoot in the Park* and she recently appeared as a featured vocalist in the wildly popular *Mack is Back!*. In addition to her work with Legacy, Stephanie sits on the Performing Arts Advisory Council at the University of Notre Dame and has been a member of the Board of Trustees at the Goodspeed Opera House. She has become involved on a producing level with critically-acclaimed productions of *Gypsy* and *Showboat* in London's West End, the revival of *Sweeney Todd* in New York, and Broadway's *Escape to Margaritaville*. As a former Miss Connecticut, she represented our state at the Miss America Pageant in Atlantic City. She holds a Bachelor of Arts, magna cum laude, from Fairfield University and a Juris Doctorate with honors from the University of Connecticut School of Law. Stephanie is the proud mother of two adult children, Valerie and Rick, and lives in Guilford with her wonderful husband, Luke.



JULIANNE ALBERTY (*Managing Director*) is honored to join the team at Legacy Theatre as the first Managing Director. She brings over two decades of experience in both the arts and non-profit sectors, most recently as the Executive Director of Volunteer Square,

an organization that connects volunteers with opportunities across Connecticut, through an online matching service. Previously, she was the Manager of Community and Family Programs at Lincoln Center Education where she led the team that launched the first-ever family engagement initiative for those who wouldn't otherwise have access to Lincoln Center. In just two years, the program served over 700 families, from all five boroughs, with 25 events annually that included educational workshops and resources for families to enjoy outside of the performance time. Also at Lincoln Center, she established arts residencies with two domestic violence shelters in the Bronx and with three non-secure and secure detention sites serving court involved young people in New York City. As an arts consultant, Julianne has been the Managing Director of New England Theatre Conference, a theatrical trade organization that connects, supports, and provides resources to theatre artists and educators throughout the New England region, since 2017. She has also served as the Director of Ads and Sponsorships for Shakespeare on the Sound in Rowayton, CT for the last two years. Prior to entering the non-profit sector, Julianne began her career as a professional stage manager and proud

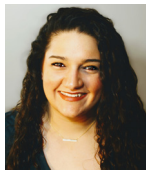
Legacy Who's Who



member of Actor's Equity, working in both regional and Off-Broadway theaters for over eight years. A native of Fairfield County, Julianne relocated from New York City to Milford, CT in 2016, where she lives with her amazingly supportive husband, Joseph, and their two beautiful children, Isabella and Javier.



KIERSTEN BJORK (*Theatre Manager*) is thrilled to be a part of the Legacy team as Theatre Manager. She is a 2021 graduate of Fairfield University, graduating summa cum laude and Phi Beta Kappa with degrees in Theatre and English. In addition to her work with Legacy, Kiersten does freelance theatre work for the Quick Center for the Arts and Theatre Fairfield. She is also a performer, having most recently played the role of June/"Squish" in *Chicago* with Shoreline Theatre Company and Ink the Cat in Legacy's production of *The Tales of Custard the Dragon*. Other favorite performing credits include Legacy Theatre's *A Christmas Carol* (Fan/Mrs. Fezziwig/Others) and *Joan Joyce* (Young Joan Joyce), and Theatre Fairfield's *The Spitfire Grill* (Percy), [title of show] (Susan), *Titus Andronicus* (Demetrius), *Fortinbras* (Laertes), and *Authenticity* (Alice). Kiersten's credits also include director, scenic designer, master carpenter, board operator, stage manager, assistant stage manager, and runner on numerous productions over the past several years, with favorites being *I Do! I Do!* (ASM, Legacy Theatre) and *The Curious Incident of the Dog in the Night-time* (Master Carpenter, Theatre Fairfield).



SARAH PERO (*Production Manager*) Born and raised in New Haven, CT, Sarah has been involved with local community and professional theatre for 20+ years. Acting at the age of 10, and directing at 16, Sarah received her BFA in Theatre, with a concentration in directing from the University of Rhode Island. Right after college, Sarah was a part-time drama teacher in New Haven Public Schools and also taught theatre classes with Performing Arts Programs (South Windsor, CT). Sarah then worked at the Music Theatre of CT (Norwalk, CT) School of Performing Arts, wearing many hats as Administrative Manager, Teaching Artist, Director, Music Director, and Choreographer for the school. Sarah also managed the Box Office and was the Resident Sound Designer for MTC's Professional Main Stage. Following MTC, Sarah worked as Administrative Manager at the Downtown Cabaret Theatre (Bridgeport, CT). As a Production Stage Manager for various Theatre Productions in Rhode Island and Connecticut, some of her favorites include: *Tick, Tick Boom!*; *Little Women: The Musical*; and *You're a Good Man Charlie Brown*. Most

recently, Sarah served as the Production Stage Manager for *I Do! I Do!* and multiple Legacy productions in the 2021 season. Sarah is thrilled to officially join the Legacy team as Production Manager.



COLIN SHEEHAN (*Producer of Broadway Spotlight Series and Community Arts Coordinator*) is a local arts enthusiast and serves as the Arts, Culture & Special Events Coordinator for the Town of Branford, Director of The Branford High School Performing Arts'

Spring Musical, and Co-Founder and Co-Artistic Director of Branford Parks and Recreation Shoreline Theatre Company. He graduated from Branford High School and continued his studies at Wagner College with a B.A. in Theatre and Speech Performance. In 2003, he made his Broadway debut in the closing night production of *Les Misérables*. In '99, Colin appeared numerous times on *The Rosie O'Donnell Show* and worked for three seasons on *The Wendy Williams Show*. Colin has produced, directed, hosted, and performed in the tri-state area and abroad with Broadway Cruises, Nickelodeon Cruises, and R Family Vacations Cruises. Colin is a philanthropist and has hosted, produced and raised funds and awareness for many organizations in Branford and beyond.



MARY LEE WEBER (*Marketing and Community Outreach*) is a Marketing and Communications consultant who has lived in Branford since 1988. She held the position of Director of Marketing and Community Development for the ABC affiliate WTNH-8 for 17 years where she

was responsible for non-traditional revenue and community partnerships. With a local creative team she Executive Produced a short documentary for the Stony Creek Museum called *Born at The Water's Edge*. It features interviews and information about the Thimble Islands and the history of Stony Creek including brief segments about Legacy Theatre, the Stony Creek Fife and Drum Corps and the Quarry. Mary Lee also helped with the Legacy Theatre productions while they were in residence at the Stony Creek Museum in 2018-19. She joined Legacy to help with Marketing and Community Outreach and is thrilled to play even a small part in helping Legacy bring theatre back to Stony Creek.

Legacy Who's Who



JEFF ZEITLIN (*Front of House Manager*)

A long-time resident of Guilford, CT, Jeff's love of theatre was taken to the next level when his daughter was a part of the Guilford High School Theatre Arts program. Jeff served as a Board Member of the school's Theatre Arts

Parents Support. He then became the Box Office Manager and Front of House Advisor for GHSTA. He continues in that volunteer role today. Along with his wife, Alyson, he was an usher at The Ivoryton Playhouse. Most recently, he was a House Manager at The Katherine Hepburn Cultural Arts Center ("The Kate") in Old Saybrook. He first became aware of The Legacy Theatre when attending a couple of fundraisers a few years ago. He was taken by the plans for the historic building and the prospect of bringing high quality Broadway productions and performers to the shoreline. Jeff's community involvement also extends to Guilford A Better Chance where he is a member of the Board of Directors. When not at the theatre, Jeff is Loyalty Manager for IKEA in

New Haven, focusing on Public and Community Relations. Jeff looks forward to welcoming theatre-goers from near and far to The Legacy Theatre!

ACTOR'S EQUITY ASSOCIATION (AEA) was founded in 1913, and AEA represents more than 50,000 actors and stage managers in the United States. Equity seeks to advance, promote and foster the art of live theatre as an essential component of our society. Equity negotiates wages and working conditions, providing a wide range of benefits, including health and pension plans. AEA is a member of the AFL-CIO, and is affiliated with FIA, an international organization of performing arts unions. The Equity emblem is our mark of excellence. www.actorsequity.org

FLY ME TO THE MOON
THE LEGACY THEATRE 2022 GALA

Saturday,
October 15

Scan for Gala Sponsorship Opportunities!

CHRISTINE J. CIOCIOLA ATTORNEY AT LAW

150 WEST MAIN STREET
BRANFORD, CT 06405

TELEPHONE (203) 483-1773
FACSIMILE (203) 483-1045

cjciociola@comcast.net

Legacy Who's Who



LEGACY THEATRE STAFF

Artistic Director & Co-Founder	KEELY BAISDEN KNUDSEN
Co-Founder	STEPHANIE STIEFEL WILLIAMS
Managing Director	JULIANNE ALBERTY
Theatre Manager	KIERSTEN BJORK
Production Manager	SARAH PERO
Producer of Broadway Spotlight Series & Community Arts Coordinator	COLIN SHEEHAN
Marketing and Community Outreach	MARY LEE WEBER
Front of House Manager & COVID Safety Manager	JEFF ZEITLIN
Front of House Alternates	CHRIS LEMIEUX, KELSEY MULLIGAN
Graphic Designer	JOE LANDRY
Interns	JARED CICCIA, SAMUEL DORIELAN

LEGACY THEATRE BOARD OF TRUSTEES

Stephanie Williams, *President*
Jana Shea, *Vice President*
Kathleen Murphy, *Secretary*
Luke Williams, *Treasurer*

Elena Cahill
Damian Doria
Katina Gionteris
Charles Grady
Brian Knudsen
Tom Shea
Aleta Staton
Earl Tucker

James Roday Rodriguez, *Honorary Board Member*

LEGACY THEATRE ADVISORY COUNCIL

As of August 17, 2022

Bob and Maryann Babcock
Susan Barnes
Betty Ann Donegan
Carol and Tom Gagliardi
Eunice Lasala
Bonnie and Andy McKirdy
Bob and Jeanette Mobeck
Greg Nobile
Melodie Lane and Curt O'Connor
Patrick and Stacey Ruwe
Colin Sheehan
Barry and Patti Sinoway
Hal Spitzer
Mary Lee Weber
Jeff Zeitlin

SPECIAL THANKS

Legacy Volunteers and Shuttle Drivers, TYCO, The Stony Creek Community,
The Bjork Family, Brian W. Knudsen, Nancy Smith, Bill and Mary Ellen Hass, Don Weinbach,
1928 Cocktail Club, Christensen Landscaping (Lawn Company), Auntie Bella (Cleaning)

CONTACT LEGACY THEATRE

Box Office: (203) 315-1901
Email: Info@LegacyTheatreCT.org
Website: www.LegacyTheatreCT.org

Support Legacy Theatre



Legacy Theatre is very excited to bring Mainstage Performances, Broadway Spotlight Concerts, Family Series and so much more to the Village of Stony Creek! As a nonprofit, we rely on the generosity of our donors and community. There are many ways for you to support us!

NAMING OPPORTUNITIES!

Leave your Legacy in this historic, fully restored, state-of-the-art, gorgeous theatre! Naming Opportunities still available.

NAME A SEAT!

Name a Seat at the Legacy before they are all gone!

BECOME A 2022 SPONSOR!

Please consider including Legacy Theatre in your 2022 marketing efforts. We have sponsorship opportunities for every budget!

DEDICATE A PERFORMANCE!

Honor someone special in your life by dedicating any event at Legacy Theatre! Dedicating a performance is truly a unique way to commemorate a birthday, anniversary, or an achievement.

(Please Note: Tickets are not included in this Dedicate a Performance Program.)

Many other ways to contribute, including:

- Buy a Program Ad
- Order Gift Certificates
- Donations, one-time or monthly
- Help to make the Wheel Life Theatre Troupe free for its participants
- Amazon Smile, iGive and more

**Contact Julie Alberty, Managing Director,
at julie@legacytheatrect.org**

**Visit www.legacytheatrect.org/donate
Scan this code to learn more and to partner with us!**



Legacy Theatre is a tax-exempt, 501(c)(3) organization and donations are tax-deductible to the fullest extent allowed by law.

Thank You!



LEGACY THEATRE FOUNDERS

\$500,000 and up

Stephanie & Luke Williams

\$250,000-\$499,000

Trailviews Foundation

\$100,000-\$249,000

Jana & Tom Shea

\$50,000-\$99,999

Roslyn Milstein Meyer & Jerome Meyer
Ignacio & Joan Rodriguez

\$10,000-\$49,999

Anonymous

Branford Community Foundation

Judge Guido & Anne Calabresi

Empire Paving

Carol & Tom Gagliardi

Guilford Savings Bank

Richard Hassan & Stephanie Sugin

Joyce Mailhouse

MFUND

Robert and Jeanette Mobeck

O,R&L Construction

Preservation Connecticut & 1772 Foundation

Steve Prinz

Franklin Todd & Wendy Renz Family

James Roday Rodriguez

The Sassafras Foundation, Inc

Webster Private Bank

Jason Wiesenfeld

LEGACY THEATRE NAMERS

As of August 17, 2022

LEGACY THEATRE

By a Generous Donation from
The Stiefel and Williams Family

GEORGE VICTOR ARTIST COTTAGE

By a Generous Donation from Jana and Tom Shea

BOX OFFICE

By a Generous Donation from
Jeffrey and Nancy Hoffman

BOX SEATS

MFUND
O,R,&L Construction Corp.
Stephanie and Luke Williams

VITRINES (right and left)

By a Generous Donation from
The Jeffrey and Nancy Hoffman Family

THEATRE PROJECTION SYSTEM

By a Generous Donation from
The Cassella Family & American Polyfilm, Inc.

HISTORIC WINDOW: SILENT PICTURE ERA

By a Generous Donation from Kiki and Ted Kennedy, Jr.

HISTORIC WINDOW: ORSON WELLES ERA

By a Generous Gift in Honor of
The Actors from the Mailhouse Family

HISTORIC WINDOW: PUPPET HOUSE ERA

By a Generous Donation from Franklin Todd
& Wendy Renz Family

STAGE LEVEL DRESSING ROOM

The James Buchanan Dressing Room, made possible by a
generous donation from James Roday Rodriguez

STAGE CURTAIN

In loving memory of Catherine Pierson Stiefel,
made possible by a generous donation from William Stiefel

GRAND PIANO

Colonel Benny and Willa Knudsen

ROOF

Branford Community Foundation,
1772 Foundation and CT Preservation

Thank You!



NAMED SEATS

As of August 17, 2022

BOX SEATS:

MFUNd, Rick Mayer
MFUNd, Melanie Barocas Mayer
MFUNd, Ariel Barocas Mayer
MFUNd, Miela Barocas Mayer
O,R&L Construction (4 Seats)
In Loving Memory of Catherine Stiefel
In Loving Memory of Werner Stiefel
In Loving Memory of Richard Stiefel
In Loving Memory of Minna Williams

NAMED SEATS, DONATED BY:

In Loving Memory of
Herman Abbott by David Bailey
F. Vining Bigelow
Melanie and Mark Bond
Branford Hills Home Care Services
The BRNFD BTCHS 2021
P.J. & Lauren Camp
Alpha E. Coiro, Long Live Theatre!
In Loving Memory of Dan & Alice Cosgrove
from Susan Cosgrove Barnes
In Memory of Nelson Denny
John and Betty Ann Donegan
The Ells Family
In Honor of Kate Fletcher
from her loving David
CT Home Automation,
Michele & Bill Fredericks
Carol & Tom Gagliardi
The Gionteris Family, Greeks in the Creek
Linda & Vincent Giordano
Brian & Keely Knudsen and Family
Joyce Mailhouse
Robert "Pat" Mailhouse
Terri Mallory & Dr. Kate Heilpern

Robert & Jeanette Mobeck and Family
Nancy & Joe Mooney
Curtis O'Connor
Melodie Lane O'Connor
In Loving Memory of
Albert & Edith Prinz
Violetta & Steven Prinz Family
Joan Stiefel Rodriguez
Ignacio Rodriguez
Andrew Rodriguez
Marilyn Rodriguez
The Royal Court Singers
Melrene & Ronald Savin
Gage K. Seymour
Shelton Family
Stephanie Ann Smelser and
Benet Steven Polikoff
Celebrating 45 years of friendship
with Nancy C Smith by Carol Soesbe
In memory of Nancy C. Sorensen
by William, Sandra, Norma,
Curtis, Peter & Jeannette
"Make Voyages" T.W., Leonardo H. Suzio
Luke Williams
Rick Williams
Stephanie Williams
Valerie Williams
Zeitlin and Evans Family

STACKABLE SEATS, DONATED BY:

In Loving Memory of
Dayle S. Mulligan by daughter Kelsey
In Honor of Kelsey Mulligan
by Regan Mulligan
Colin Sheehan

Thank You!



2022 LEGACY MEMBERS

As of August 17, 2022

Albertus Magnus College
Maryann & Robert Babcock
Susan Bender & Al Klevatorick
Christine and Ken Bjork
Dorothy Bjork
Victor and Lorraine Budnick
John Bysiewicz & Jenny Glass
Elena Cahill & Family
Toni Cartisano
Don and Deborah Conklin
Joanne Cristiano
Maureen DiAdamo
Julie Fitzpatrick, Peter Palumbo & Fitz Pant
Carol & Tom Gagliardi
Caroline and Kit Henningsen
Elizabeth Hulinsky
Michael Infantino Jr.

Diane Insolio
Roger Joyce
Linda Klein
Larry & Anne Kluetsch
Anne Kluetsch
Sean Marston
Lisa and Jim McKay
The Palluzzi Family
Janice Pastorek
Linda Reason
Todd & Wendy Renz Family
Kim Santagata
Domenic Setaro
Jean Tomasso
Chris & Tammie Ulbrich
Leonard Wyeth Family

2022 SEASON SPONSORS

As of August 17, 2022

JANA & TOM SHEA BROADWAY CONCERT SERIES

Sponsored by Jana and Tom Shea

Sponsored in part by WMNR Fine Arts Radio

FAMILY EVENT SPONSOR

I Love Tacos Sponsored by Webster Private Bank

WHEEL LIFE THEATRE TROUPE SPONSORS

Branford Community Foundation

Guilford Foundation

Guilford Savings Bank

SPECIAL EVENT SPONSOR

Mack is Back! The Music of Bobby Darin! Sponsored by IAC and A-1 Toyota

COMMUNITY SPONSOR

Liberty Bank

FRIENDS OF LEGACY THEATRE

Bailey Scarano LLC

valpak is proud to support The Legacy Theater.



What can Valpak do for your business?

Contact us and let's get started building your campaign today!

Mark Barillaro

mark_barillaro@valpak.com - 860.552.8109

Save more at Valpak.com!

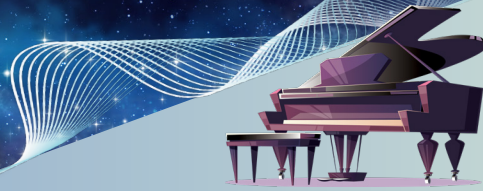
COMING SOON



FLY ME TO THE MOON

THE LEGACY THEATRE 2022 GALA

Saturday,
October 15



Scan for Gala
Sponsorship
Opportunities!



2023 SEASON

Season Announcement Coming:
October 21



*Last Year's SOLD OUT Hit
Returns for the Holiday Season!*

November 30 - December 11

TICKETS NOW ON SALE!

Don't Miss Out! Order Now!

Box Office: (203) 315-1901
Visit LegacyTheatreCT.org

